

Contents

Community Overview

- History of Kent
- History of the Kent Library
- Kent Regional Library's Service Area Today
- Kent Regional Library Today
- Kent City and Library Historical Timeline

Community Study Recommendations

Board Presentation Slides

Aerial Overview and Circulation Map

- Aerial Overview
- Circulation Map

Appendices

- Demographic Data
- Schools Data

Community Overview

History of Kent

Fertile lands of the White River Valley originally brought settlers to the Kent area in the 1850s and 1860s. By the late 1870s, hops had become the local cash crop, attracting rail services and administrative development. Timber also played a prominent early economic role. Although initial contact was hospitable and cooperative, Native peoples were relocated to the Muckleshoot Reservation after conflicts developed. Many of these tribal people would return to Kent farmlands each year as seasonal laborers.

Kent incorporated as a city in May 1890; the second to do so in King County after Washington was awarded statehood in 1889. Industry in the first part of the 20th century was still tied to agriculture, primarily lettuce after the hops boom ended. The loss of hops income also spurred the development of dairies, in particular the predecessor of the Carnation Milk Company. Increasing rail traffic, freight transport and economic success in turn stimulated the construction of paved roads and highways. By the end of World War I, dairy profits were dwindling and many farmers switched to berry production. Seasonal labor needs brought other immigrants to Kent, in particular Europeans and Japanese. The latter leased plots (being barred from owning land) to develop their own farms, and by 1920 over half the milk and berries consumed in Seattle derived from Japanese farms.

World War II brought Japanese relocation and a shift to defense industry products. Wider industrial development in the Kent Valley was hampered by regular Green River flooding. After a devastating 1946 flood, community leaders petitioned for Congressional assistance to construct a dam at Eagle Gorge on the upper portion of the river. With the completion of the Howard Hanson Dam in 1963, and the creation of a linked high-speed roadway system, industrial development on the valley floor turned Kent into a major manufacturing and distribution center.

Economic growth continues to play a key role in Kent's future. A central location, 18 miles equidistant from Seattle and Tacoma, makes Kent attractive as one of the largest warehouse, distribution and manufacturing centers in North America. Boeing, R.E.I., Hexcel, Sysco, Mikron, Oberto Sausage, United Airlines, Food Services of America, Starbucks, Office Depot, Dreyer's Grand Ice Cream, Flow International and USF Reddaway are a few of the largest private employers within the city.

Historical information was compiled from:
Cameron, C.E. History, Kent Washington U.S.A. and its Heritage: Natural Resources, Native Beauties, Pioneers, Ancient. Seattle: Ballard Print and Pub., 1978.

Lentz, Florence K. Kent--Valley of Opportunity: An Illustrated History. Chatsworth, Calif.: Windsor Publications, 1990.

History of the Kent Library

In 1920, the library committee of the Red Cross Community Center decided to establish the Kent Public Library. This library, comprised of donated books and a volunteer staff, opened for service on August 23, 1920. The location was a single room in the Red Cross Community Center located at First Avenue, which was previously a Post Office Store.

In December 1922, the library moved to new quarters in City Hall at Second and Gowe. The library had its first appointed board in 1923, and in 1926 Mrs. Anna Fisher became the first salaried librarian. She remained with the library until 1950.

On October 5, 1959, the City of Kent contracted with King County Library System for staff and materials. A new 4,200 square foot library, co-owned by the City and KCLS, was planned at the intersection of Fourth and Titus. One house needed to be removed from the site, and was burned to the ground by the Kent Fire Department as a firefighting exercise on April 22, 1959! The new Kent/KCLS library opened for service on January 17, 1960.

In 1972, with the passage of a bond issue in Kent and with funding from a previous KCLS bond issue, a new 15,000 square foot library was built at Fourth and Titus. This library opened on October 1, 1973 with a capacity for holding 60,000 volumes. Board recommendations in 1975 included the idea of serving coffee once a week to enhance public relations. In January of 1980 the library initiated Sunday hours, and in 1981 videos became available for checkout.

As the Kent community continued to grow, library usage increased. In 1986, the Kent Library was one of the five busiest libraries in the System with over half a million items checked out. Library Friends, board members and city officials discussed options for a larger building, and in 1987 the decision to jointly build a new library was reached.

Library and City officials selected the Sea-Kent Cold Storage Plant at the corners of First and Second at Smith Street, as the home for the current Kent Regional Library. Local officials swung their sledgehammers for a demolition groundbreaking on October 20, 1988. The plant was demolished, but frozen soil up to 24 feet deep required the use of permafrost technology to speed up the thawing process. This involved drilling holes into the soil to allow ground water to seep into the holes. Fill dirt reinforced the land, and pilings were driven more than 30 feet into the ground to secure the foundation. Soil contamination (diesel fuel and fuel oil) further complicated the building schedule.

Construction for this \$3.2 million building began in July 1990 under general contractor Eberharter Construction. The architect, Henry Klein Partnership, chose rounded exterior walls to absorb sounds and to muffle the rumblings of passing trains. Brick construction represented the tradition of the book while the glass and metal of the

skylights pointed to new technologies available within the library. The “Sentinel Kent” sculpture by Valdis Zarins stands watch over passers-by.

The current library opened its doors September 23, 1991, and residents of the city voted to annex to the King County Library System in 1993.

The Kent Library has inhabited five different spaces over the years; one had its beginning in fire, and the most current, its birth in ice.

Information compiled from Scrapbooks of the Friends of the Kent Regional Library, and “Celebrate the Opening of the Kent Regional Library” and “History of the Kent Regional Library.”

Kent Regional Library's Service Area Today

The Kent Regional Library Service Area includes the City of Kent and census tract areas to the northeast in the Kent East Hill area. North boundaries include SE 208th Street and 43rd Street SW. The Western boundary approximates I-5 and the southernmost boundary is S 288th Street. Eastern boundaries include 132nd Avenue in the northeast and 148th Avenue in the southeast. Major thoroughfares include Highways 167 and 516 (Kent-Des Moines Road), the East and West Valley Highways, the rail system (Sounder Train), and although not within the service area, I-5 (due to its proximity). Accessible from the Seattle and Tacoma ports and 10 minutes from the SeaTac airport, Kent supports 45 million square feet of industrial and manufacturing space.

The northwest and southwest portions of the service area are primarily manufacturing, corporate and warehouse facilities. The Kent Transit Center serves the downtown area, with Park and Ride lots at the Transit Center, the Kent-Des Moines Road and I-5 intersection, and at Lake Meridian. The DART (Shopper Shuttle) route connects the downtown Kent area to the Kent East Hill, and the Sounder Train stops across the street from the library. In February 2003 a circulating Metro shuttle route was added to support employers in the Valley. This shuttle connects the Sounder to many business sites including the Boeing Space Center and the Centre Point Business Park. Recent, current and pending expansion projects (196th/200th Street Corridor and Grade Separation, South 277th Reconstruction Project and 228th Street extension) are designed to facilitate traffic flow in and out of the Valley and reflect City and County awareness of growth constraints, supplier and shipper mobility and workforce development.

The City of Kent has grown to become the third largest city in King County and the seventh largest in the state. The 1990 population of 37,960 has increased to 84,210 in 2003. Kent's population is projected to grow to over 110,000 in the next three to five years, fueled by a possible annexation in the NE area of 192nd and 108th Avenue, and multi-unit residential development south of 212th on previously leased Boeing property (recently purchased by Segale). In addition, the City of Kent is in negotiation as a site for the Seattle Sounder stadium and practice fields.

The City, in its "Economic Development Strategic Plan 2003-2008," targets "...creating a vibrant downtown to serve as a destination retail and community gathering place" as one of its short-term goals. Kent plans to break ground in 2004 on the Downtown Station project, a \$130 million, 530,000 square-foot revitalization plan. Located adjacent to the Sounder Station and the Kent Regional Library, the project includes a branch campus of Green River Community College, a multiplex cinema, restaurants, shops, retail outlets and a residential complex (200 market rate units). Ramsay Way will be constructed to connect Fourth and Second avenues, transporting vehicle and pedestrian traffic to and from the downtown area. Portions of Second Avenue will be designed as a pedestrian corridor connecting historic Kent with the Downtown Station. Use of landscaping, street furniture and design features will create an attractive strolling and resting space.

As Kent has grown, it has also changed to welcome a more diverse population. The Kent School District estimates that over 86 languages other than English are spoken in the homes of its students. Kent and other cities in South King County have become more attractive as housing and rental costs increase in Seattle.

The Kent area is home to a range of housing stock from public housing, to nursing, retirement and senior citizen complexes, to mobile home courts and RV parks, to mid-range track or mixed design areas, to gated communities.

The City of Kent actively promotes cultural and recreational activities. Kent Parks and Recreation is involved in regular and seasonal family events such as Kent Kids Arts Day. Residents have access to over 1,093 acres of parks, trails and common grounds. The River Bend Golf Course, the Kent Commons (recreational) and the Kent Senior Activity Center are popular gathering places, as are the two skateboard parks and play lots scattered throughout the city. The Kent Valley Ice Centre, built on City parkland, is available to the City for instructional use. The City of Kent hosts some of the largest festivals in the area, including Kent Cornucopia, Canterbury Faire, and the Fourth of July Splash.

Key organizations in the area include the Kent Chamber of Commerce, the Kent Downtown Partnership, the Kent Community Foundation, the Lions Club and Rotary.

News outlets include the South County edition of the *King County Journal*, the *Kent Reporter* and Kent TV21 (City government channel).

Kent Regional Library Today

The Kent Regional Library serves a changing and growing population. It is not unusual to hear Russian, Ukrainian, Vietnamese, Spanish, Somali and a host of other languages besides English being spoken in the building (Kent regularly ranks as the second highest library to issue new cards).

The library offers a wide variety of programs: Baby, Preschool, Toddler, Bilingual and Sleepy Story Times, Book Explorers Club and the Wednesday Afternoon Book Bunch. Varied cultural/educational programs for children, teens and adults are scheduled throughout the year. Kent serves as an evening site for English as a Second Language (ESL) classes. Staff conducts regular tours for ESL students from World Relief, Green River Community College and Highline Community College. Participants from Washington Women's Employment and Education (WWEE) attend a scheduled orientation to library resources as a part of their curriculum. Regular and bilingual computer classes are offered, as well as an ongoing 55 Alive driving class.

The library gained four new access points during the 2002 migration to Thin Client stations and customers appreciate and take advantage of the wireless connectivity both in and outside of the building. Kent has served as a test site for Telus computer sign-up and print management, and will be one of the project sites for Roving Reference. The Roving Reference Pilot Project began during the summer of 2003 with a goal to "maximize staff availability to assist patrons by offering help where needed." Scheduled roving times, statistic-keeping and a preferred level of contact (asking patrons if they need help, rather than assuming patrons will approach the roaming librarian) ensure that effective outreach is maintained. To facilitate "on the floor" responses, iPac-enabled tablets (laptops) will be placed in several locations around the library, serving as searchable kiosks for patrons and/or staff.

The collection of 142,232 volumes offers popular homework support for the 14 district schools. The students from nearby Kentview Christian School visit and use the library weekly. Many students attending nearby community colleges (Green River, Highline, Renton) and four-year institutions find both the print and online resources helpful for coursework and papers. Reference questions are varied and complex, and staff heavily promote the many databases as a valuable component of library research.

Library computers (50 regular and two child-sized) are extremely popular and used throughout the day for sending e-mails, composing résumés, searching for jobs, following investments, typing assignments or playing games. Patrons are truly pleased that KCLS offers text-support for World Languages which allows them to communicate with families and friends throughout the world in their language of choice.

The Kent Friends support library programs and activities with sales from computer disks and donated books.

The Kent Regional Library continues to be a busy and popular destination point for increasing numbers of Valley and East/West Hill residents.

Kent City and Library Historical Timeline

1888	First listing of Kent as a town (name derived from Kent, England, a hops-growing center)
May 28, 1890	Kent City incorporates
August 23, 1920	Kent Public Library formed with donations and housed in the Red Cross Community Center (previously a Post Office store)
December 22, 1922	Library moved into newly constructed City Hall at Second and Gowe Street
1926	Anna Fisher (first Librarian), hired by the City
October 5, 1959	Kent City contracts with KCLS to co-operate library
January 17, 1960	Opening ceremony for new Kent/KCLS library at Fourth and Titus Street
1964	Kent Boeing facility opens
October 1, 1973	New library opens (previous site expanded)—books had been stored temporarily at the Kent West Mall
September 23, 1991	Opening of new library location at Second and Smith Street
October 12, 1991	Dedication ceremony for new library
1993	City of Kent annexes library to KCLS
1994	First Kent Community Study
2003	Second Kent Community Study

Community Study Recommendations

The Kent Regional library's goal in developing and implementing recommendations is to blend regional library services with community and outreach activities. The Kent community is rich with diversity. For some, the concept of free libraries with access to a wealth of resources is a new concept. Our mission is to reach out and welcome all members of our community to the public library with extra emphasis given to those whose first language is not English or in school neighborhoods serving a higher percentage of participants in the free/reduced lunch program.

Education and Youth Initiative

Send welcoming letter to all schools at beginning of year. The letter would introduce new teachers to Kent Library and would solicit schools for open house dates and other after-school activities that library staff can attend.

Select four of the needier, lower scoring schools (on Washington Assessment of Student Learning and Iowa Test of Basic Skills). Target first and third grades for additional school visits from the library staff. Attend an open house or after-school activity to promote library awareness and services.

Develop a parent advocate cadre at the target schools to aid the library in promoting services, visits, database presentations, etc.

In conjunction with developing parent advocates, strategize about alternatives to get the library message out to faculty and staff at Kent Meridian High School.

Investigate the feasibility of a tutoring program. Contact local service organizations for volunteer pool. Utilize Library System resources available through volunteer coordinator. Promote system-offered service, Tutor.com.

Distribute bibliographies to schools via school libraries, open houses, reading specialists and parent advocates.

Encourage district high school to put KCLS logo on school computer desktops.

Hold a database contest for elementary and junior/senior high school students. Kent Friends would provide prizes (i.e. \$50 gift certificate at bookstore).

Develop and provide library services packets (with cards, hours and information) to school offices for distribution to new students during the year.

Attend school curriculum nights at target schools to raise awareness of library services.

Respond to Initiative recommendation by developing a Quiet Study Area.

Reading and Youth Initiative

Continue Book Explorers and the afternoon adult book club.

Investigate possibility of nighttime adult book club.

Promote reading through local author visits and community celebrity readings.
Sponsor two special events annually (e.g. Read Across America Day).

Involve more staff in Ready-Set-Read promotion.

Actively promote the collection through Choice Reads and other displays.

Sponsor a D.E.A.R (Drop Everything and Read) night at library for ages 5-12.

Partner with Kent School District on the 21st Century grant. The joint school/community/library project would use the Kent Regional Library as a weekend site for Motherread/Fatheread programs—family literacy activities, developed for children in K-6 founded on the premise that parents have a significant influence on their child's reading skills and that more time spent between them in reading activities will lead to improved literacy skills.

Literacy

Expand ESL classes.

Update ESL notebook with information on classes available at other sites (times, locations, duration, eligibility and registration requirements).

Develop a handout with local sources for ESL/Adult Basic Education.

Customer Service

Plan, prepare and implement customer-friendly self checkout stations.

Participate as a pilot site in the Roving Reference Project.

Provide an enclosed "Quiet Study Area" similar to the Burien and Lake Hills Teen Zones.

Relocate World Languages, ESL and non-English periodicals to central location.

Promote increased use of Large Print materials through relocation.

Initiate a "Staff Picks" display quarterly.

Create a "Customer Picks" area. Highlight two customer-generated reviews each month in display area.

Sponsor an all-ages poetry/rap slam as an after hours program. Seek assistance from Spoken Word Lab and Kent Arts staff.

Contact and work with city agencies or developer to create a library presence at Kent Station Project (kiosk, book drop, WiFi access point).

Investigate the possibility of making DSHS forms available at the library (similar to IRS).

Stock tourist information on Kent and Seattle area in library foyer.

Facilitate computer assistance and classes by rearranging PCs in a central area.

Survey customers to determine areas of interest for additional computer classes. Add computer classes based on survey results.

Outreach/Community Relationships

Increase distribution of library monthly calendar and special programs flyers throughout the community with special emphasis on the West Hill area. Contact churches and West Hill organizations to increase effectiveness.

Join Kent Downtown Partnership and participate in monthly meetings.

Continue participation in City Homeless and Transient Committee.

Work with social service and ministry-based committee to establish a "day hygiene center" in Kent.

Increase outreach and Story Time services to Early Childhood Education and Assistance Programs/Headstart sites.

Add additional non-English Story Time. Consider Ukrainian or Russian.

Develop a volunteer language cadre with a regular monthly schedule to assist non-English speakers with questions about library cards and services.

Display non-English library application forms and welcoming materials in a prominent place.

Continue Washington Women's Employment Education tours.

In conjunction with the Kent Downtown Partnership and Chamber, offer a "Business before Hours" program.

Continue participation in "Books for Babies" project.

Collections

Focus on developing a collection that serves as a resource center for school support.

Enhance African-American fiction collection.

Develop a collection of selected Hi/Lo materials (readers) for teens and adults.

Enhance film collection. Increase popular and language holdings (Spanish, Ukrainian, Russian, Vietnamese, Hindi, Panjabi, Arabic).

Enhance non-English periodical holdings.

Information Technology Services

See Kent Station project in *Customer Service*.

Create a preschool computer lab.

Facilities

Create a cohesive, unified long-term approach to floor plan, furniture, lighting and exterior/interior elements.

Explore improved access to drive-up book drop.

Enhance electrical/data systems to support added Thin Client stations plus preschool computer lab.

Provide high wall signage to reflect relocation of materials.

Community Study

Kent Regional Library

HISTORY

- 1850 - Fertile lands of the White River Valley brings farming settlers to the Kent area.
- 1890 - Kent City Incorporates.
- 1920 - Kent Public Library forms; housed in the Red Cross Community Center.
- 1959 - City contracts with KCLS to co-operate library.
- 1922 - Library moves into newly constructed City Hall.
- 1926 - City hires first librarian.
- 1991 - New regional library opens.
- 1993 - City of Kent annexes library to KCLS.



September 2003



Community Study

Kent Regional Library

COMMUNITY

BUSINESS AND EMPLOYMENT

- A central location, 18 miles equidistant from Seattle and Tacoma, makes Kent attractive as one of the largest warehouse, distribution and manufacturing centers in North America.
- Boeing, R.E.I., Hexcel, Sysco, Mikron, Oberto Sausage, United Airlines, Food Services of America, Starbucks, Office Depot, Dreyer's Grand Ice Cream, Flow International and USF Reddaway are a few of the largest private employers.



September 2003



Community Study

Kent Regional Library

COMMUNITY

BUSINESS AND EMPLOYMENT

- 2004 plans to break ground on Downtown Station project, located adjacent to the Sounder Station and the Library. Project includes:
 - Branch of Green River Community College
 - Multiplex cinema
 - Restaurants
 - Shops
 - Retail outlets
 - Residential complex



September 2003

Community Study

Kent Regional Library

COMMUNITY

Transportation

- Kent Transit Center serves the downtown area, with Park & Ride lots at the Transit Center, Kent-Des Moines Road and I-5 Intersection, and Lake Meridian.
- DART Shopper Shuttle route connects downtown Kent to Kent East Hill.
- Sounder Train stops across the street from the library.
- Circulating Metro shuttle connects the Sounder to many area business sites.
- Recent, current and pending expansion projects are designed to facilitate traffic flow in and out of the Valley.



September 2003

Community Study

Kent Regional Library

DEMOGRAPHICS

- Population: 84,210, up from 37,960 in 1990.
- Over 86 languages other than English are spoken in homes.
- Commonly heard languages in the library include Russian, Ukrainian, Vietnamese, Spanish and Somali.



September 2003

Community Study

Kent Regional Library

POPULATION	Service Area 2000	Kent 2000	KING COUNTY 2000
TOTAL POPULATION	97,045	79,524	1,737,034
WHITE	71.9%	70.8%	75.7%
ASIAN	10.6%	9.4%	10.8%



September 2003

Community Study

Kent Regional Library

POPULATION	Service Area 2000	Kent 2000	KING COUNTY 2000
HISPANIC/LATINO	6.8%	8.1%	5.5%
AFRICAN AMERICAN	7.3%	8.2%	5.4%
PACIFIC ISL.	0.7%	0.8%	0.5%
NATIVE AMERICAN	0.9%	1%	0.9%

September 2003



Community Study

Kent Regional Library

AGE	Service Area 2000	Kent 2000	KING COUNTY 2000
17 AND UNDER	28.3%	27.7%	22.5%
18 AND OVER	71.7%	72.3%	77.5%
65 AND OVER	7.4%	7.3%	10.5%

September 2003



Community Study

Kent Regional Library

INCOME	Service Area	Kent	KING COUNTY
Median	\$52,767	\$46,046	\$53,157



September 2003

Community Study

Kent Regional Library

COMMUNITY

HOUSING

- Kent has become more attractive to home-buyers as housing and rental costs increase in Seattle.
- Kent area is home to a range of housing stock from public housing, to nursing, retirement and senior citizen complexes, to mobile home courts and RV parks, to mid-range track or mixed design areas, to gated communities.



September 2003

Community Study

Kent Regional Library

COMMUNITY

PARKS AND RECREATION

- Residents have access to over 1,093 acres of parks, trails and common grounds.
- River Bend Golf Course, Kent Commons, Kent Senior Activity Center, skateboard parks and play lots are popular gathering places.
- City hosts some of the largest festivals in the area, including Kent Cornucopia, Canterbury Faire and the Fourth of July Splash.
- Kent Parks and Recreation is involved in regular and seasonal family events such as Kent Kids Arts Day.



September 2003

Community Study

Kent Regional Library

RECOMMENDATIONS



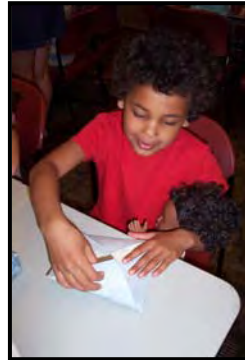
September 2003

Community Study

Kent Regional Library

EDUCATION & YOUTH SERVICES

- Send welcoming letter to all schools at beginning of year. The letter would introduce new teachers to Kent Library and would solicit schools for open house dates and other after-school activities that library staff can attend.
- Select four of the needier, lower scoring schools (on Washington Assessment of Student Learning and Iowa Test of Basic Skills.) Target first and third grades for additional school visits from the library staff. Attend an open house or after-school activity to promote library awareness and services.
- Develop a parent advocate cadre at the target schools to aid the library in promoting services, visits, database presentations, etc.



September 2003

Community Study

Kent Regional Library

EDUCATION & YOUTH SERVICES

- In conjunction with developing parent advocates, strategize about alternatives to get the library message out to faculty and staff at Kent Meridian High School.
- Investigate the feasibility of a tutoring program. Contact local service organizations for volunteer pool. Utilize Library System resources available through volunteer coordinator. Promote system-offered service, Tutor.com.
- Distribute bibliographies to schools via school libraries, open houses, reading specialists and parent advocates.
- Encourage district high school to put KCLS icon on school computer desktops.



September 2003

Community Study

Kent Regional Library

EDUCATION & YOUTH SERVICES

- Hold a database contest for elementary and junior/senior high school students. Kent Friends would provide prizes (i.e. \$50 gift certificate at bookstore).
- Develop and provide library services packets (with cards, hours and information) to school offices for distribution to new students during the year.
- Attend school curriculum nights at target schools to raise awareness of library services.
- Respond to Initiative recommendation by developing a Quiet Study Area.



September 2003

Community Study

Kent Regional Library

READING & YOUTH SERVICES

- Continue Book Explorers and the afternoon adult book club.
- Investigate possibility of nighttime adult book club.
- Promote reading through local author visits and community celebrity readings. Sponsor two special events annually (e.g. Read Across America Day).
- Involve more staff in Ready-Set-Read promotion.



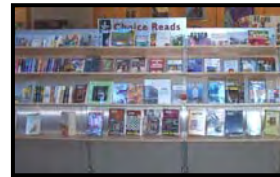
September 2003

Community Study

Kent Regional Library

READING & YOUTH SERVICES

- Actively promote the collection through Choice Reads and other displays.
- Sponsor a D.E.A.R (Drop Everything and Read) night at library for ages 5-12.
- Partner with Kent School District on the 21st Century grant. The joint school/community/library project would use the Kent Regional Library as a weekend site for Motherread/Fatheread programs—family literacy activities, developed for children in K-6 founded on the premise that parents have a significant influence on their child's reading skills and that more time spent between them in reading activities will lead to improved literacy skills.



September 2003

Community Study

Kent Regional Library

LITERACY

- Expand ESL classes.
- Update ESL notebook with information on classes available at other sites (times, locations, duration, eligibility and registration requirements).
- Develop a handout with local sources for ESL/Adult Basic Education.



September 2003

Community Study

Kent Regional Library

CUSTOMER SERVICE

- Plan, prepare and implement customer-friendly self checkout stations.
- Participate as a pilot site in the Roving Reference Project.
- Provide an enclosed "Quiet Study Area" similar to the Burien and Lake Hills Teen Zones.
- Relocate World Languages, ESL and non-English periodicals to central location.
- Promote increased use of Large Print materials through relocation.
- Initiate a "Staff Picks" display quarterly.
- Create a "Customer Picks" area. Highlight two customer-generated reviews each month in display area.



September 2003

Community Study

Kent Regional Library

CUSTOMER SERVICE

- Sponsor an all-ages poetry/rap slam as an after hours program. Seek assistance from Spoken Word Lab and Kent Arts staff.
- Contact and work with city agencies or developer to create a library presence at Kent Station Project (kiosk, book drop, WiFi access point).
- Investigate the possibility of making DSHS forms available at the library (similar to IRS).
- Stock tourist information on Kent and Seattle area in library foyer.
- Facilitate computer assistance and classes by rearranging PCs in central area.
- Survey customers to determine areas of interest for additional computer classes.
- Add computer classes based on survey results.



September 2003

Community Study

Kent Regional Library

OUTREACH/COMMUNITY RELATIONSHIPS

- Increase distribution of library monthly calendar and special programs flyers throughout the community with special emphasis on the West Hill area. Contact churches and West Hill organizations to increase effectiveness.
- Join Kent Downtown Partnership and participate in monthly meetings.
- Continue participation in City Homeless and Transient Committee.
- Work with social service and ministry-based committee to establish a "day hygiene center" in Kent.
- Increase outreach and Story Time services to Early Childhood Education and Assistance Programs/Headstart sites.



September 2003

Community Study

Kent Regional Library

OUTREACH/COMMUNITY RELATIONSHIPS

- Add additional non-English Story Time. Consider Ukrainian or Russian.
- Develop a volunteer language cadre with a regular monthly schedule to assist non-English speakers with questions about library cards and services.
- Display non-English library application forms and welcoming materials in a prominent place.
- Continue Washington Women's Employment Education tours.
- In conjunction with the Kent Downtown Partnership and Chamber, offer a "Business before Hours" program.
- Continue participation in "Books for Babies" project.



September 2003

Community Study

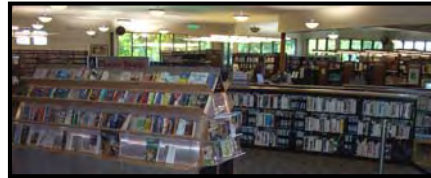
Kent Regional Library

COLLECTIONS

- Focus on developing a collection that serves as a resource center for school support.
- Enhance African-American fiction collection.
- Develop a collection of selected Hi/Lo materials (readers) for teens and adults.
- Enhance film collection. Increase popular and language holdings (Spanish, Ukrainian, Russian, Vietnamese, Hindi, Panjabi, Arabic).
- Enhance non-English periodical holdings.



September 2003



Community Study

Kent Regional Library

ITS

- See Kent Station project in *Customer Service*.
- Create a preschool computer lab.



September 2003

Community Study

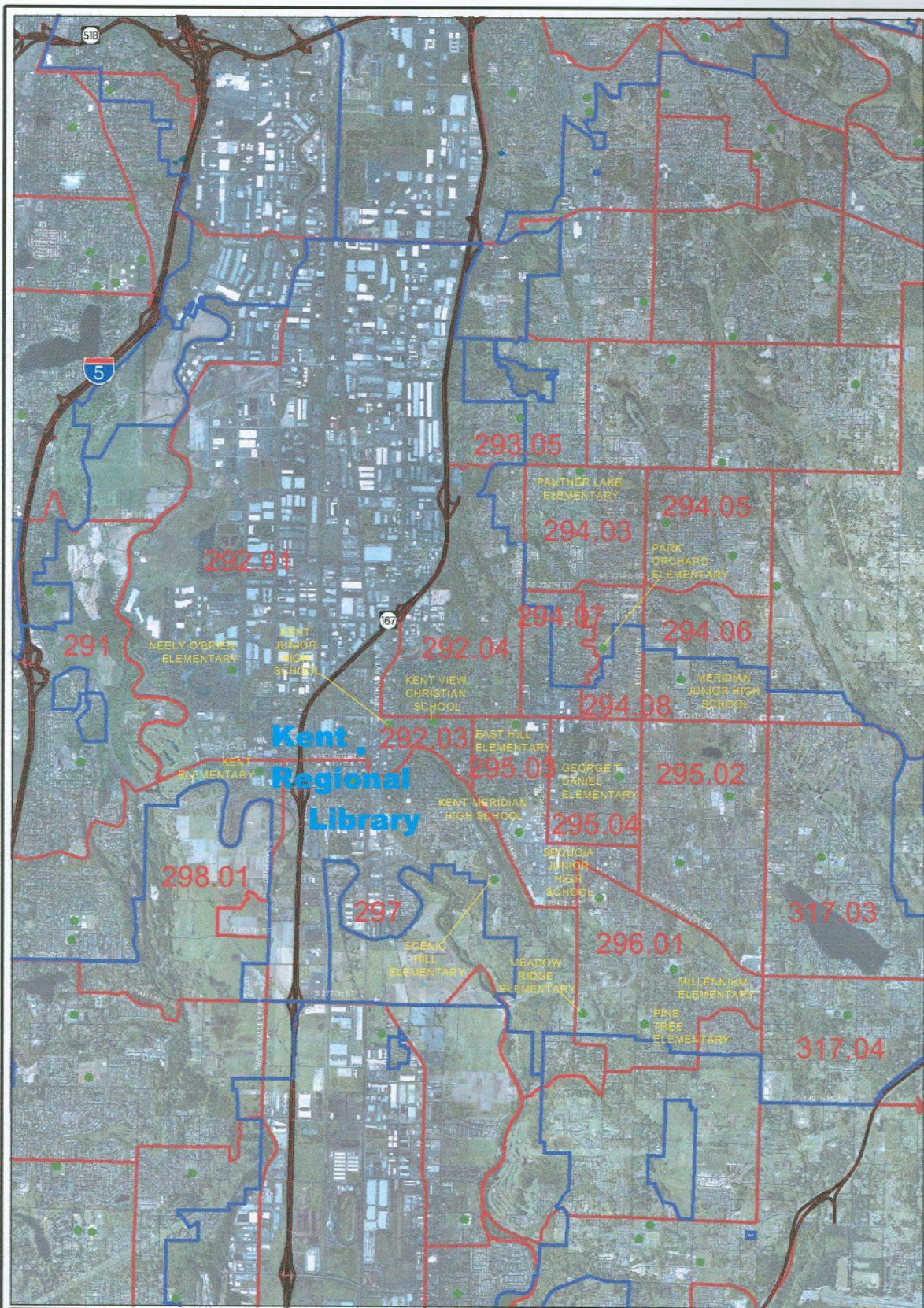
Kent Regional Library

FACILITIES

- Create a cohesive, unified long-term approach to floor plan, furniture, lighting and exterior/interior elements.
- Explore improved access to drive-up book drop.
- Enhance electrical/data systems to support added Thin Client stations plus preschool computer lab.
- Provide high wall signage to reflect relocation of materials.



September 2003



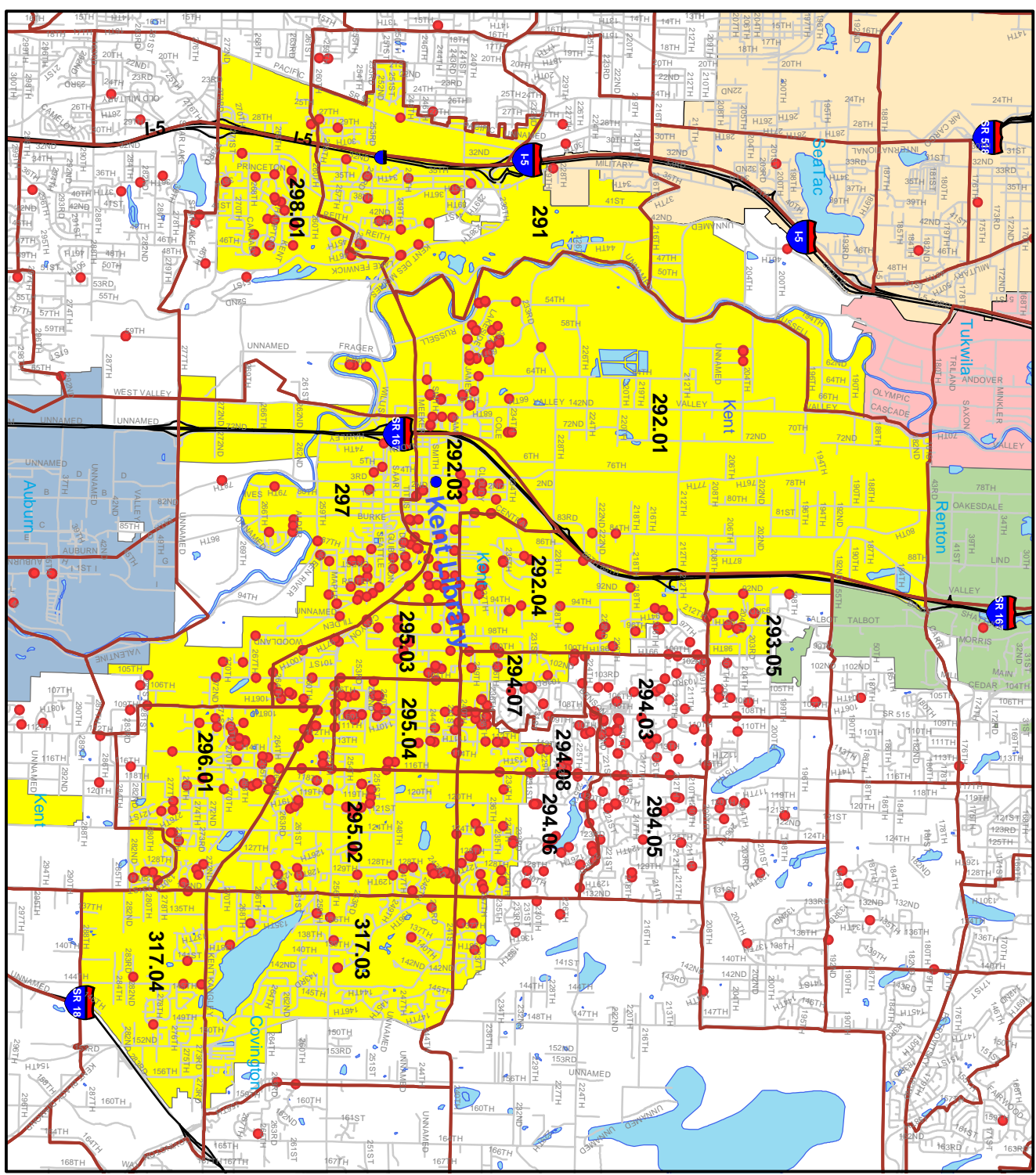
KEY

- Census Tracts
- Municipal Boundaries
- Public Buildings**
- Libraries
- Schools



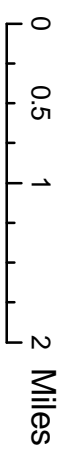
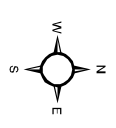
**Kent Regional Library
King County Library System**

Kent Regional Service Area Circulation (May 3, 4, 5, 2003)



- Legend**
- 2000 Census Tracts
 - kent0503_address
 - kent0504_address
 - kent0505_address

- Cities**
- Auburn
 - Kent
 - Renton
 - SeaTac
 - Tukwila



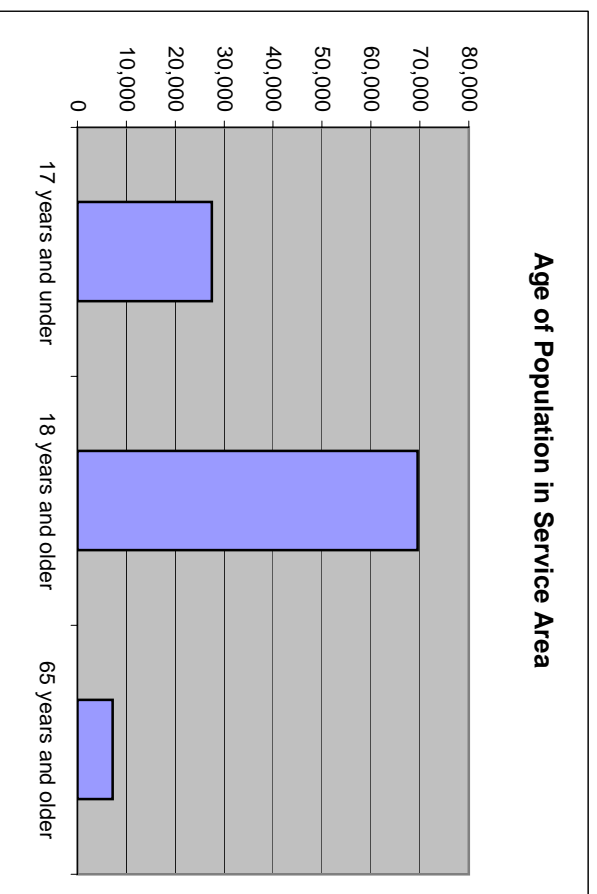
KCLS 5/03

Kent Regional Library Service Area Demographic Summary

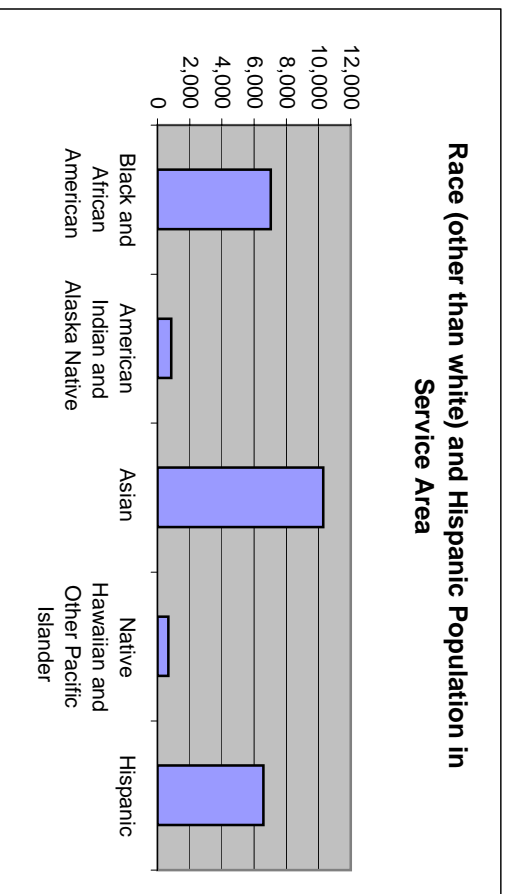
2000 Census - 100% Data: Summary File 1	Library Service Area	City of Kent	King County
Population	97,045	79,524	1,737,034
Average household size	2.70	2.53	2.39
Median age	32.8	31.8	35.7
Under 18 years	28.3%	27.7%	22.5%
65 and over	7.4%	7.3%	10.5%
White	71.9%	70.8%	75.7%
Black	7.3%	8.2%	5.4%
Asian	10.6%	9.4%	10.8%
Hispanic	6.8%	8.1%	5.5%
American Indian and Alaskan	0.9%	1.0%	0.9%
Native Hawaiian and Other Pacific Islander	0.7%	0.8%	0.5%
Owner occupied housing	55.5%	52.0%	65.0%
Renter occupied housing	44.5%	48.0%	35.0%
2000 Census - Sample Data: Summary File 3			
Median household income	\$ 52,767	\$ 46,046	\$ 53,157
Median home value	\$ 179,794	\$ 178,000	\$ 236,900
Educational attainment - high school graduate or higher	87.5%	86.6%	90.3%
Educational attainment - bachelor's degree or higher	24.4%	24.0%	40.0%
Foreign born	16.4%	16.9%	15.4%
Language other than English	20.9%	21.8%	18.4%

6/24/2003

AGE	Service Area Census Tract Totals	City of Kent	King County
17 years and under	27,489	22,011	390,646
%	28.3%	27.7%	22.5%
18 years and older	69,556	57,513	1,346,388
%	71.7%	72.3%	77.5%
65 years and older	7,210	5,838	181,772
%	7.4%	7.3%	10.5%



RACE and HISPANIC	Service Area Census Tract Totals	City of Kent	King County
White	69,784	56,307	1,315,507
%	71.9%	70.8%	75.7%
Black and African American	7,040	6,547	93,875
%	7.3%	8.2%	5.4%
American Indian and Alaska Native	847	777	15,922
%	0.9%	1.0%	0.9%
Asian	10,291	7,489	187,745
%	10.6%	9.4%	10.8%
Native Hawaiian and Other Pacific Islander	683	608	9,013
%	0.7%	0.8%	0.5%
Hispanic	6568	6,466	95,242
%	6.8%	8.1%	5.5%



2000 Census

LANGUAGE SPOKEN AT HOME FOR THE POPULATION 5 YEARS AND OVER (PCT 10)	Kent Regional Library Service Area	
Total- 5 years and over:**	89,117	100.0%
Spanish	4,841	5.4%
Other Slavic languages**	1,649	1.9%
Vietnamese	1,499	1.7%
Tagalog	1,307	1.5%
Russian	1,289	1.4%
Other Indic languages***	1,273	1.4%
Chinese	1,227	1.4%
African languages	836	0.9%
Korean	800	0.9%

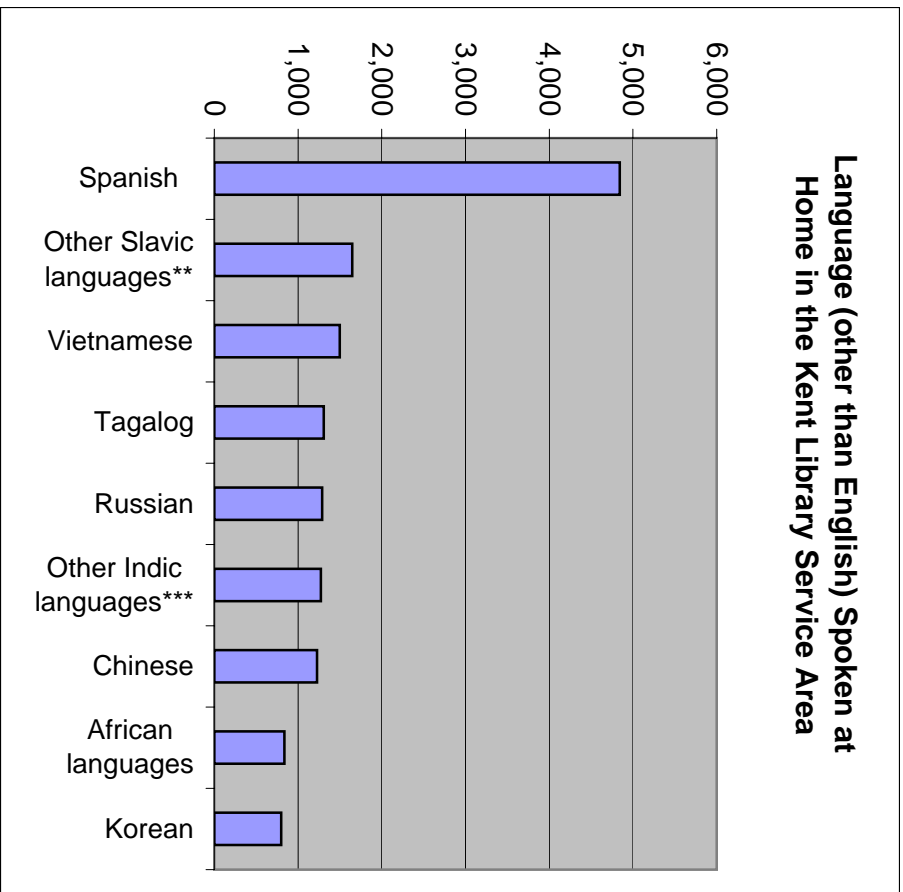
*This list represents the 9 highest language populations from table PCT 10 (SF 3)

** Other Slavic languages include Czech, Slovak, and Ukrainian

*** Other Indic languages include Bengali, Marathi, Punjabi, and Romany

Summary File 3, Technical Documentation, Page B-30

6/24/2003



Sources Consulted

Interviews/Conversations

Jim White, Mayor of Kent
Nathan Torgelson, Economic Development Manager, City of Kent
Barbara Ivanov, Executive Director, Kent Chamber of Commerce
Jacquie Alexander, Executive Director, Kent Downtown Partnership
Rebecca Hanks, Kent School District, Community Connections
Tal Guppy, Kent School District, Principal, Neely O'Brien School
Cathy Dormaier, Kent School District, Principal Park Orchard
Sandra Collins, Kent School District, Board of Directors
Sandra Hart-Moore, Kent School District, Principal, Grass Lake
Keyenda Wilson, Kent Head Start Teacher
Beckie Leslie, Seattle and King County Public Health Department
Ukrainian Christian Center
Harvest Christian School
Robert Gonzales, Business Owner
Asquiles Solteros, Business Owner
Reverend Frank J. Williams
Sherri Haynie, Curator, Greater Kent Historical Society and Museum
Golda Walia, Supervisor, King South WorkFirst
Paul Viullandry, African American Cultural Center

Community Data Resources

U.S. Census Bureau; American Factfinder; 2000 Summary File 1; generated by Cheryl Fontaine (30 June 2003).

<http://factfinder.census.gov/servlet/BasicFactsServlet>

U.S. Census Bureau; American Factfinder; 2000 Summary File 3, DP-2,3,4; generated by Cheryl Fontaine (24 June 2003).

<http://factfinder.census.gov/servlet/BasicFactsServlet>

Washington State; Office of Superintendent of Public Instruction; State Assessment Information Education Profile. <http://www.k12.wa.us/edprofile/>

Historical Resources

Cameron, C.E. History, Kent Washington U.S.A. and its Heritage: Natural Resources, Native Beauties, Pioneers, Ancient. Seattle: Ballard Print and Pub., 1978.

Lentz, Florence K. Kent--Valley of Opportunity: An Illustrated History. Chatsworth, Calif.: Windsor Publications, 1990.

Historical photographs provided by the Greater Kent Historical Society Museum