

# Engage.

Skyway Library  
2010 Community Study



kcls•

# CONTENTS

---

## COMMUNITY OVERVIEW

Executive Summary .....	1
History of Skyway .....	1
History of the Skyway Library .....	2
Skyway Today .....	2
Geography .....	2
Demographics .....	3
Transportation .....	3
Housing .....	4
Business & Employment .....	4
Government Services.....	4
Community Organizations .....	4
Parks & Recreation .....	5
Education, Schools & Children .....	6
The Skyway Library Today & Tomorrow.....	6
Current and Future Services for Children .....	6
Current and Future Services for Teens .....	7
Current and Future Services for Adults .....	8
Patron Feedback & Survey Results.....	9

## COMMUNITY STUDY RECOMMENDATIONS ..... 10

## BOARD PRESENTATION SLIDES

### MAPS

- Census Tracts with Schools
- Aerial Overview

### APPENDICES

- Demographic Summary
- Population Trends & Growth
- School Statistics & Test Scores
- Age in Service Area
- Race in Service Area
- Languages Spoken at Home
- Occupational Profiles
- Childcare Information
- Survey Response Summary
- Sources

# COMMUNITY OVERVIEW

---

## EXECUTIVE SUMMARY

The area surrounding the current Skyway Library is still unincorporated King County, with the Seattle city limits located to the north and the Renton city limits to the east. Currently annexation of the Skyway area to Renton is under consideration. Annexation to either Renton or Seattle is controversial, but King County government is strongly encouraging unincorporated “islands” like Skyway to annex to a neighboring city.

Annexation first was raised as a possibility in the 1940s, after an unsuccessful attempt was made to incorporate the community. Annexation to Seattle was filed after the incorporation proposal was made; however, both proposals were defeated.

In 1993, the West Hill area was included in the Renton Potential Annexation Area (PAA), but removed in 1998 due to uncertainty about the fiscal implications of a possible future annexation. In 1999, a survey of residents was taken for the West Hill Governance Options study. The results indicated that 66% of respondents said that they preferred the status quo (unincorporated), 30% favored annexation and 4% favored incorporation.

In 2005, the citizen-driven West Hill Governance Task Force determined that annexation to Renton was in the best interest of the community and asked the Renton City Council to include the area in its PAA. In late 2005, the Renton City Council took action to designate the West Hill as part of Renton’s PAA. In the fall of 2008, residents of the West Hill area submitted a petition for annexation to the City of Renton. King County Elections certified petition signatures in December 2008. The City of Renton submitted a notice of intent to annex this area to the Washington State Boundary Review Board (BRB) to consider this annexation. At the time of this report, the Boundary Review Board has voted to approve the annexation. In October 2009, the Earlington neighborhood annexed to the City of Renton.

The business district has been in decline for about 10 years and the area has suffered from increased crime. Even so, the West Hill Business Association is actively committed to the commercial revitalization of the area. There is hope that when the current annexation question is resolved, the community’s business climate will improve and crime will decline.

## HISTORY OF SKYWAY

Farms sprouted up in the areas below the *Skyway Hill* starting around 1870. During the late 1800s and early 1900s there was a sheep ranch where Dimmit Middle School is today. In the 1930s Kidujiro Mano and his wife Riki came from Japan and started a greenhouse in Bryn Mawr, moving it a few years later to 80<sup>th</sup> South and South 116<sup>th</sup> (just off of Renton Avenue). Even though Kidujiro Mano, his wife and children were interred during World War II, they

returned to the same location and continued to operate the greenhouse until about 1995. Minter's Earlington Nursery, the current greenhouse under different ownership, is a very popular place to purchase plants and landscaping supplies for anyone living in South Seattle and Renton, as well as Skyway.

Development in the area now known as Skyway began around 1940. After World War II, the *Skyway Hill* was developed into a neighborhood of small homes to accommodate returning soldiers and their young families. The Skyway Veterans of Foreign Wars, Post No. 9430 was started and is still in existence today, providing a place for many neighborhood meetings.

The community grew very quickly from 1950 through the 1970s. Many businesses and community clubs thrived. During the 1950s and early 1960s, there were several very active community groups, such as the Skyway Athletic Club, that sponsored a youth little league and a very active business association, the Skyway Commercial Club.

## **HISTORY OF THE SKYWAY LIBRARY**

Soon after the close of World War II, Skyway residents asked KCLS to serve the area. As a result, KCLS began providing bookmobile service. The bookmobile service could not satisfy the demand for library materials and a number of local residents became actively interested in fundraising projects, including dances, talent shows, car washes and candy, popcorn and book sales, to make the establishment of a permanent library feasible.

On January 26, 1953, the newly formed Skyway Library Board signed an agreement with KCLS to set up a Skyway Library. The Library's first location was in the back of Kimball's Bakery at 12623 Renton Avenue and a few months later was moved to a rent-free location at 12321 Renton Avenue. Then, about two months later, it was moved again to a third location at the old fire hall. The Library Board then purchased a housing unit built in 1945 where the Library operated for 10 years. In 1963, the unit was enlarged and housed the library until the current building at 7614 South 126<sup>th</sup> Street was opened on March 8, 1970. The Skyway Library has been remodeled twice, once in 1991 and again in 2009.

## **SKYWAY TODAY**

### **GEOGRAPHY**

The West Hill is 3.062 square miles bordering Lake Washington, Seattle, Tukwila and Renton. Eight neighborhoods make up the area, including Bryn Mawr, Lakeridge, Skyway, Earlington, Campbell Hill, Panorama, Skycrest and Hill Top. The community is bordered on the north by the City of Seattle, on the northeast by Lake Washington on the east and south by Renton, and on the west by Tukwila, the Burlington Northern railroad track and Interstate 5.

Land forms include steep and gradual slopes, lowlands, hillsides and ravines, which are associated with environmentally sensitive areas that surround the entire community.

Topography ranges from lowlands at the Lake Washington shore and Duwamish River near the

southwestern boundary, to a ridge with elevations of nearly 500 feet near the Skyway business district. Major traffic routes (Renton Avenue & Martin Luther King Way South) divide neighborhoods. Unusual views of Mt. Rainier, the Seattle skyline, Lake Washington, Renton and Tukwila are community attributes.

The major tributary in the West Hill is Taylor Creek, a small stream that flows 1.35 miles through Lakeridge Park (City of Seattle) in Dead Horse Canyon into Lake Washington. Taylor Creek is fed by two sources, springs in the woodland to the southwest of the park and from a stream that runs through the Skyway Park neighborhood. A number of unnamed streams in the area flow into Lake Washington and two unnamed tributaries are part of the Duwamish River Basin. The eastern half generally lies within the Cedar River Basin and the remaining portion within the Green River Basin. There are several wetlands in the area, including one in Skyway Park.

Olympic Pipe Line Company's lateral line transports petroleum fuel from Renton to a tank farm on Harbor Island. The line runs underground through the neighborhood, underneath Seattle City Light's 230 kV transmission line right of way. That right of way cuts through Skyway from the southeast to the northwest and runs along the north end of the Skyway Library property.

## **DEMOGRAPHICS**

The Skyway area is a racially diverse area. In 2009, about 25% of the population was African American and 22% were Asian (versus 5.9% and 13.9% respectively in King County). In contrast, only 41% of residents were white, much lower than King County's 70% or higher.

In 2008, the total population of the area was 23,256, an increase from the 2000 population of 21,918. Median age is 39 years. In 2000, the area had a larger share of older residents and a smaller share of young adults than did King County, Seattle or Renton. Roughly 15% of residents were over the age of 65 and 24% were between the ages of 45 and 64.

## **TRANSPORTATION**

Some Skyway neighborhoods seem isolated in out of the way places on winding streets nestled between hills. Other streets are laid out grid fashion and are easier to navigate. The entire West Hill area is ringed with major arterials. Rainier Avenue South is along the north and east, and Martin Luther King Jr. (State Route 900) is on the west and south, both flowing into Renton. The presence of so many major arterials with fast moving traffic and multiple lanes presents major challenges in connecting residents from one neighborhood to the next.

The area is served by bus routes 101, 102, 106 and 107, which all originate at the Renton Transit Center. Routes 101 and 106 run to downtown Seattle, while 107's northern terminus is in the Rainier Beach neighborhood. The closest access to light rail is the Rainier Beach station, less than four miles from the West Hill.

## **HOUSING**

There are more than 5,500 housing units in the area with 72.5% being single family units. Multi-family housing developments are located adjacent to the Skyway business district. Mobile home parks are located on waterfront property on Rainier Avenue South and along Martin Luther King Way South. The median house value is about \$181,400. Three tent cities have located in the community during the last six years.

## **BUSINESS & EMPLOYMENT**

There are two small business districts along Renton Avenue South, one along Martin Luther King Way South and another along Rainier Avenue South. In addition to two casinos, there are several restaurants in the business districts. A US Bank branch is located on Renton Avenue across from the Skyway Library. There are no major stores and no place to buy groceries except convenience stores. Other businesses include a nursery, pawn shop, model shop, churches, automotive businesses, gas stations, storage facilities, insurance agencies, chiropractors, a dentist, a driving school and numerous home-based businesses.

Major employers include Skyway Park Bowl & Casino, Roman Casino, Holcam Sales Inc, Dimmitt Middle School, King County Fire District 20, The Lakeshore, and Lakeridge, Bryn Mawr and Campbell Hill Elementary Schools.

The business districts contain many vacant storefronts in buildings owned by absentee landlords, a source of frustration to area residents and businesses.

## **GOVERNMENT SERVICES**

Fire protection is provided by King County Fire District 20 with a combination of 40 volunteer and seven professional firefighters. Its facilities include the Bryn Mawr Fire Station, which is staffed by volunteers, the Skyway Fire Station and a training center with a training tower.

Public safety is provided by the King County Sheriff's West Hill storefront office and the Precinct 4 station in Burien, which dispatches officers to the neighborhood.

Other government services in the area include the Skyway Post Office and the Skyway Water & Sewer District, which maintains about 48 miles of sewer system piping and 35 miles of water mains. Water comes from the Cascade Water Alliance, which purchases water from Seattle Public Utilities, City of Renton and district wells.

## **COMMUNITY ORGANIZATIONS**

The demand for services is a challenge to the existing organizations in the community. Some agencies that served the demand for food, clothing and other services have closed. The following agencies and organizations work hard to balance the need for services.

- **West Hill Business Association:** A non-profit organization that serves as "Chamber of Commerce" for the area, promoting the economic development and vitality of the community. The Skyway Library is a member of this organization.
- **West Hill Community Council:** A non-profit organization that works to improve communication between County government and area residents by preserving, protecting and improving the neighborhood in accord with the wishes of the community.
- **Skyway Solutions:** A group of volunteers that came together in 2008 as a result of King County's Community Enhancement Initiative (CEI), which enlisted the Pomegranate Center to work on a community community-based planning process. The group is now moving forward on its own, working on six goals that were identified by the community. Projects include the "I See Skyway" mural at the intersection of South 129<sup>th</sup> Street and Martin Luther King Jr Way South, as well as numerous park improvements including a community garden, wetlands restoration and artistic gateways into the park.
- **Skyway VFW:** Post 9430 has been active in the community since after World War II. The organization initiated the development of Skyway Park before King County took over in 1953.
- **Renton Area Youth & Family Services (RAYS):** Provides services like free parenting classes at local schools, parent support groups and counseling.
- **Renton/Skyway Boys & Girls Club:** Provides child care and teen programs. It is located next to Dimmitt Middle School in a facility owned by King County that originally was the West Hill Community Center.
- **Urban Family Center:** A team based in Creston Point Apartments that provides children, youth and family services, community events and activities.
- **Spiritual Miracles:** A faith-based food bank and outreach ministry providing spiritual guidance and basic necessities to individuals who are in need.

## **PARKS & RECREATION**

Skyway Park features ball fields, a play structure, basketball and tennis courts, a picnic area and restroom. The park's three wetlands function as one of the sources of Taylor Creek, a salmon-bearing stream that passes through Seattle's Dead Horse Canyon and enters Lake Washington. The Friends of Skyway Park, committed to bringing Skyway Park back to life, organize parks clean-up and betterment projects.

Lakeridge Park was named in 1947 by the Seattle Planning Commission. The park was once known as "Dead Horse Canyon," named in 1909 by homesteader Chas J. Walker upon the

death and dehydration of a horse that had long roamed the area and been a pet of pioneer children. Walker helped log this area for the Taylor Sawmill on the beach just to the east. George Kinnear was the original owner of the property. The actual park is located in the City of Seattle, but straddles the West Hill neighborhood.

In addition, the Skyway area is home to Bryn Mawr Park (an undeveloped passive park of 4.81 acres), Earlington Park (now part of the City of Renton) and the Lakeridge Swim Club (a private six-lane, 25-yard outdoor pool with attached dive tank).

## **EDUCATION, SCHOOLS & CHILDREN**

The majority of children and teens in the Skyway community attend public schools in the Renton School District, which ranks third in diversity of the 19 school districts in King County. According to the Renton School District, current student demographics include white (40.6%), Asian (23.7%), African American (19.7%), Hispanic (14.7%) and Native American (1.3%). About 13% of Renton's students are enrolled in ESL programs.

The Skyway Library serves five of these schools: Campbell Hill Elementary, Lakeridge Elementary, Bryn Mawr Elementary, Dimmitt Middle School and Black River High School. Bryn Mawr, Campbell Hill and Lakeridge elementary schools are all Title 1 schools, based on free and reduced-price lunch percentages.

Skyway is also home to a significant population of home schooled students. These families use Skyway Library regularly to support student activities, but are predominantly independent in their use of the library's collections and services.

Based on information received from Ready Set Read participants and Summer Reading Program (SRP) signups, it is clear that the Skyway Library is serving children from several Seattle schools, other Renton schools and area private schools.

Within the Renton School District, 43.3% of students are considered to be low income. This number is higher in Skyway with two-thirds of students at Dimmitt Middle School qualifying for free lunch. These challenges have a significant impact on the ability for students to succeed academically. In 2009, only 22% of 7<sup>th</sup> grade students met state standards in all three sections of the WASL test.

## **THE SKYWAY LIBRARY TODAY & TOMORROW**

### **CURRENT AND FUTURE SERVICES FOR CHILDREN**

Weekly Story Times are an important part of the Skyway Library's service to children. A toddler and a preschool Story Time are offered from September to May. Special Story Times and tours for preschools, daycares, elementary school classes or homeschool groups are scheduled as requested. Central programs are sometimes scheduled during the Story Time hour in order to increase the range of offerings for this age group.

Several home childcare centers attend Story Time throughout the year. They are informed about special events and encouraged to sign up their children for the Summer Reading Program (SRP). At least one STARS training is offered per year.

The school librarians collaborate with the Skyway Library to promote Ready Set Read and SRP. They are also very cooperative in scheduling special KCLS assemblies for their schools. Library staff also makes presentations to school staff about KCLS databases and other services.

Renton Area Youth Services (RAYS) staff work closely with Skyway Library staff on several community events. Early Literacy presentations have been made at the RAYS center as one segment of their "Parenting for Success" programs and teen mom program. The Library also participates in the community-wide Santa Breakfast organized by RAYS.

In the Library, the collection for children is the primary outreach vehicle and staff strives to keep it well-maintained and relevant to the community. An Early Literacy module provides developmentally appropriate learning experiences for young patrons in the library. There are also two computers in the children's area: a filtered internet computer and a catalog computer which becomes a Summer Reading Program (SRP) signup station during the summer.

#### **CURRENT AND FUTURE SERVICES FOR TEENS**

Teens are heavy users of the Skyway Library, especially after school and during evening hours. This is partly due to the close proximity of Dimmitt Middle School, but also because the Library remains the only free place for teens to gather outside of school or home. Additionally, the Skyway Library is the primary Internet access point for many of the area's teens. Because so many teens lack home Internet service, the Library is a critical resource for those seeking access to email, social networking, gaming, streaming music and videos. There is also high demand for computer time for homework needs using the Internet, databases and KCLS' homework help resources.

Print materials are heavily used by Skyway's teen patrons. The teen fiction, graphic novel and periodical collections are very popular with middle and high school students. Special care has been taken to develop a fiction collection that reflects the interests and demographics of the area's teens, including an expanded graphic novel section and a range of titles that appeal especially to African American and urban teens. High circulation of the collection suggests these efforts have been successful.

The Skyway Library is also a popular place for struggling students to meet with tutors. The Library is used regularly by Seattle and Renton school districts as a place for tutors to meet with students privately. Although the Skyway Library has had KCLS-sponsored Study Zone tutors in the past, recruiting and retaining tutors has been challenging. When Study Zone tutors are available, however, they are in demand.

Programming for teens at the Skyway Library has had an uneven history. Numerous attempts to develop ongoing literature-based programs, including teen book clubs, poetry slams and writing workshops were initially successful, but fail to draw enough teens for long-term sustainability. Success with individual programs generally hinges on providing high interest content. Recently successful programs include Mehndi Madness (a temporary henna tattoo lecture and demo) and 3D Mini Beasts (a three-dimensional macro slideshow featuring insects and flowers). The most popular teen program has been Game On! (a weekly open play video game event). In general, teen programs are much more popular with younger teens rather than high school students.

Because of the challenges in offering programs within Skyway Library, the Teen Librarian focuses outreach efforts on the area's schools. Visits to Dimmitt Middle School each autumn and spring are used to promote books and reading, library programs and homework resources to the school's sixth and seventh grade classes. This has been a particularly effective way to reach a large number of teens, many of who are not seen in the Library.

The Teen Services Librarian has also cultivated a close relationship with Black River High School (BRHS) for the past three years. BRHS is considered a "last chance" school for students who have not been able to succeed elsewhere. Library services at the school are minimal, making the partnership especially valuable. Many students are reading far below grade level and reading for pleasure is not a priority for the majority of the student body. By visiting classes on a monthly basis and book talking high interest titles, the Teen Librarian has made a significant impact on students' interest in reading. The Skyway Library and BRHS have also collaborated twice to receive an ALA Great Stories Grant — a program that puts books in the hands of at-risk teens. Unfortunately, this rewarding collaboration is coming to an end in spring of 2010 because the Renton School District is closing BRHS to make way for construction of a new facility.

### **CURRENT AND FUTURE SERVICES FOR ADULTS**

The Skyway Library maintains a large collection of fiction and non-fiction materials in a variety of formats that are intended to provide adults the opportunity to explore or improve their vocational needs, leisure interests and life skills. Staff create popular monthly thematic displays to highlight various parts of the collection.

There are a many patrons who speak a languages other than, or in addition to, English. Recognizing this diversity in the community, the Library's world language collection currently includes materials in Spanish, Chinese and Vietnamese. An attempt to run a Talk Time program at the Library did not attract an audience suitable to sustain the program.

Computers are a huge draw for patrons. The library has 16 computers, as well as two laptops that can be checked out for in-library use. Attempts to schedule computer classes have been limited by the lack of of Netmaster volunteers.

The Library also offers additional programs for adults, including a monthly book discussion group and other programs relevant to current interests or issues. With the exception of tax assistance, attendance has been low for most programs, so programs have often been scheduled for Friends meetings which have a built-in audience.

The Skyway Friends of the Library put on a large annual book sale, which always attracts a crowd and makes a small profit, which is used for children's and teen programs throughout the year.

## **PATRON FEEDBACK AND SURVEY RESULTS**

The community study provided an opportunity to ask patrons how they felt the library was doing and give them a chance to offer suggestions. Surveys were distributed to patrons in the library and to community groups to get as broad a response as possible. The survey included demographic and usage questions, as well as some additional open-ended questions that were meant to solicit suggestions and comments. Nearly 100 surveys were returned.

Nearly two-thirds of respondents indicated they use other libraries, including Renton, Fairwood, Burien and Kent. The top reasons patrons said that they visit the Skyway Library was to borrow books and other library materials, and use the library computers. One question tried to ascertain factors that might prevent patrons from using the library. The predominant reasons were inability to access the library and the hours the Library is open.

While there were requests for more resources, the respondents were overwhelmingly appreciative of the library's staff, with 100% stating they were satisfied or very satisfied. According to one respondent, "This library is one of the best reasons to live in the area." Another said, "The staff at this library is super nice, helpful and personable. They know my name and my kid's name too. I love the library. Great use of taxpayer funds."

In addition to the patron surveys, an interview with members of Skyway Solutions revealed extensive interest in the new Skyway Library. The group particularly interested in seeing the Library located in such a way that it serves as an anchor for redevelopment. There was also strong interest in co-locating the library with another agency and featuring community-building elements, such as a community information kiosk, a lobby for neighborhood art, community gardens, etc. Expanded availability of computers and job resources were also suggested.

A summary of the survey results can be found in the appendices at the end of this report.

# SKYWAY LIBRARY

## COMMUNITY STUDY RECOMMENDATIONS

### FACILITATE EARLY LITERACY AND CULTIVATE YOUNG READERS

*Services and resources for parents, caregivers and their children (age birth to five) that enable children to be ready to learn, read and write.*

- Collaborate with community agencies serving the area to promote library services for parents, caregivers and their children.
- Use KCLS' Library2Go vans to service to daycares and other sites in the community.

### ENGAGE AND SUPPORT TEENS AND CHILDREN

*Services and resources for youth (ages 5 through 18) that support their education and learning, develop information literacy skills, and encourage creativity and the cultivation of interests.*

- Explore ways to collaborate with the limited number of local social service agencies that provide services to teens (e.g. Urban Family Center, Boys & Girls Club).
- Expand services to elementary school-age children to include afterschool programming.
- Introduce programs that attract middle school students.
- Identify possible destinations for KCLS' Digital Discovery Zone (DDZ) visits to increase outreach efforts to teens that don't currently use the library.
- Increase tutoring opportunities for students by expanding Study Zone volunteer hours.
- Increase promotion of KCLS online resources, including Study Zone Online, Live Homework Help and online MSP, HSPE and SAT tutoring services.

### ENCOURAGE LIFELONG LEARNING

*Services and resources for patrons to cultivate lifelong learning in a variety of areas.*

- Partner with community groups to create and programming for all ages (e.g. the Urban Family Center).
- Add print materials and increase awareness of electronic resources that focus on small business and career development, and adult continuing education.
- Promote downloadable collections to patrons.
- Utilize KCLS' Digital Discovery Zone (DDZ) to provide services to adults.

### PROVIDE PERSONALIZED INFORMATION ACCESS & ASSISTANCE

*Services and resources that provide all patrons with high quality information and personalized information search strategies, and that proactively respond to patrons' evolving information needs.*

- Develop one-on-one computer classes.
- Recruit additional Netmasters, including professionals and high school students.
- Offer SCORE counseling for small business assistance.

## **REACH & ENGAGE THE COUNTY'S CULTURALLY DIVERSE POPULATIONS**

*Services and resources that reflect and celebrate the County's culturally diverse population and ensure open access to information for patrons facing cultural and language barriers.*

- Explore ways to successfully offer Talk Time or ESL programs.
- Explore new services to Spanish-speaking patrons using skills staff learned during their Spanish language "boot camp."

## **REACH OUT TO THE COMMUNITY**

*The ways in which services are delivered reflect a fundamental shift in the role of the library. This shift involves becoming a more proactive organization, reaching out and engaging with the community.*

- Connect with the community by participating in community activities such as the Annual Classic Skyway Car Show and Skyway Solutions events.
- Revitalize the Skyway Friends of the Library.
- Coordinate with the Friends to move the annual book sale back to the library.
- Work with local law enforcement to maintain a safe and welcoming environment.

## **DELIVERING ON A PROMISE TO VOTERS**

*Implementing the facilities improvements approved by voters in the 2004 Capital Bond measure.*

- Participate in planning for library remodel with emphasis on:
  - Locating the new Skyway Library on a more visible and accessible site.
  - Exploring co-location opportunities with the new Skyway Library.
  - Making the parking lot more visible.
  - Incorporating sight lines and open space in new facility.
  - Providing adequate electrical and data connections to support technology.
  - Creating spaces for quiet reading and study.
  - Meeting the demand for computer workstations.
  - Designing a larger multi-purpose meeting room space.
  - Creating study room space.
  - Coordinating with public, non-profit and community groups working on community revitalization.



# Community Study

## Skyway Library



### ***HISTORY***

- 1940** Development begins in the area and annexation first raised
- 1953** Skyway Library Board forms and contracts with KCLS
- 1970** Skyway Library opens at its current site
- 1999** Residents surveyed for West Hill Governance Options study
- 2005** West Hill designated as part of Renton's Potential Annexation Area
- 2008** Skyway Solutions formed



# Community Study

## Skyway Library



### ***DEMOGRAPHICS***

- Largest Minority Populations :
  - African American (25%)
  - Asian/Pacific Islander (22%)
  - Hispanic 8(2%)
- Foreign Born: 17.9%
- Language Other than English: 23.4%
- Age:
  - 18 years and younger (21%)
  - 45-64 years (24%)
  - 65 years and older (15%)



# Community Study

## Skyway Library



### ***INCOME/HOUSING***

- Median home value (2009):
  - Skyway: \$328,000
  - King County: \$433,300
- Median income (2009):
  - Skyway: \$54,622
  - King County: \$65,580
- Owner Occupied: 53%
- Renter Occupied: 47%
- Employment:
  - Blue Collar: 23.3%
  - White Collar: 63.8%
  - Unemployed: 6.8%



# Community Study

## Skyway Library



### ***BUSINESS & EMPLOYMENT***

- The business districts contain many vacant storefronts in buildings owned by absentee landlords.
- No major stores and no place to buy groceries except convenience stores.
- Major employers include :
  - Skyway Park Bowl & Casino
  - Roman Casino
  - Holcam Sales Inc.
  - Dimmitt Middle School
  - King County Fire District 20



# Community Study

## Skyway Library



### ***COMMUNITY SERVICES***

- Public safety is provided by the King County Sheriff's West Hill storefront office and the Precinct 4 station in Burien
- Community organizations include:
  - West Hill Business Association
  - West Hill Community Council
  - Skyway Solutions
  - Renton Area Youth & Family Services (RAYS)
  - Renton/Skyway Boys & Girls Club
  - Urban Family Center
  - Skyway VFW
- Government services include:
  - King County Fire District 20
  - Skyway Post Office
  - Skyway Water & Sewer District



# Community Study

## Skyway Library



### ***PARKS & RECREATION***

- The Skyway area is home to:
  - **Skyway Park:** Features ball fields, a play structure, basketball and tennis courts, a picnic area and a restroom
  - **Bryn Mawr Park:** An undeveloped Passive Park of 4.81 acres
  - **Lakeridge Swim Club:** A private six-lane, 25-yard outdoor pool with dive tank
  - **Earlington Park:** Now part of the City of Renton
  - **Lakeridge Park:** Located in Seattle, but straddles the West Hill neighborhood



# Community Study

## Skyway Library



### ***EDUCATION & SCHOOLS***

- The Library serves three (3) elementary, one (1) middle and one (1) high school in the Renton School District.
- All three elementary schools served are Title 1 schools, based on free and reduced-price lunch percentages.
- In 2009, only 22% of 7<sup>th</sup> grade students met state standards in all three sections of the WASL test.
- The Renton School District ranks 3rd in diversity of the 19 school districts in King County.

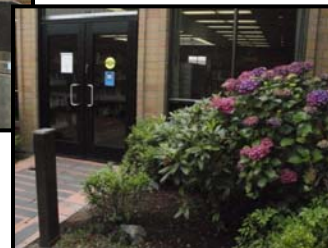


# Community Study

## Skyway Library



### ***RECOMMENDATIONS***



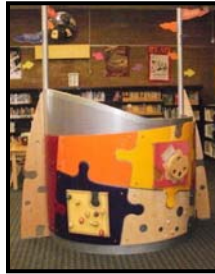
# Community Study

## Skyway Library



### FACILITATE EARLY LITERACY & CULTIVATE YOUNG READERS

- Collaborate with community agencies serving the area to promote library services for parents, caregivers and their children.
- Use KCLS' Library2Go vans to service to daycares and other sites in the community.



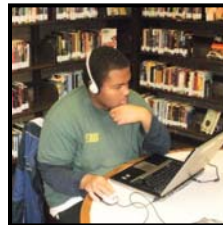
# Community Study

## Skyway Library



### ENGAGE AND SUPPORT TEENS & CHILDREN

- Explore ways to collaborate with the limited number of local social service agencies that provide services to teens.
- Introduce programs that attract middle school students.
- Expand services to elementary school-age children.
- Identify possible destinations for KCLS' Digital Discovery Zone (DDZ) visits to increase outreach efforts to teens that don't currently use the library.
- Increase tutoring opportunities by expanding Study Zone volunteer hours.



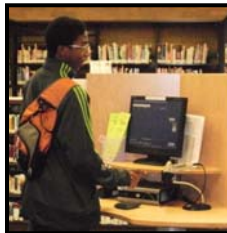
# Community Study

## Skyway Library



### ENCOURAGE LIFELONG LEARNING

- Partner with community groups to create and programming for all ages (e.g. the Urban Family Center).
- Add print materials and increase awareness of electronic resources that focus on small business and career development, and adult continuing education.
- Promote downloadable collections to patrons.
- Utilize KCLS' Digital Discovery Zone (DDZ) to provide services to adults.



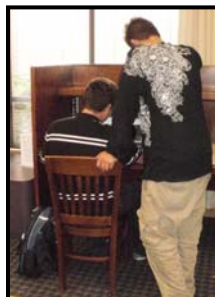
# Community Study

## Skyway Library



### PROVIDE PERSONALIZED INFORMATION ACCESS & ASSISTANCE

- Recruit additional Netmasters, including professionals & high school students.
- Develop one-on-one computer classes.
- Offer SCORE counseling for small business assistance.



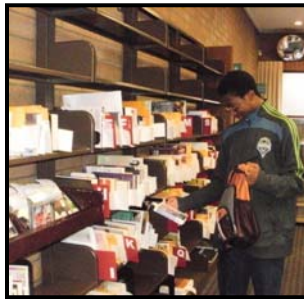
# Community Study

## Skyway Library



### REACH & ENGAGE THE COUNTY'S CULTURALLY DIVERSE POPULATIONS

- Explore ways to successfully offer Talk Time or ESL programs.
- Explore new services to Spanish-speaking patrons using skills staff learned during their Spanish language "boot camp."



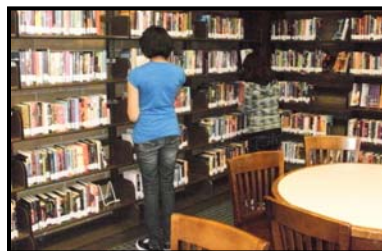
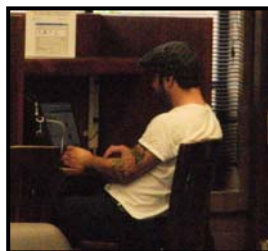
# Community Study

## Skyway Library



### REACH OUT TO THE COMMUNITY

- Connect with the community by participating in community activities such as the Annual Classic Skyway Car Show and Skyway Solutions events.
- Revitalize the Skyway Friends of the Library.
- Coordinate with the Friends to move the annual book sale back to the library.
- Work with local law enforcement to maintain a safe and welcoming environment.



# Community Study

## Skyway Library



### FACILITIES IMPROVEMENTS

Participate in planning for library remodel with emphasis on:

- Locating the new Skyway Library on a more visible and accessible site
- Exploring co-location opportunities with the new Skyway Library
- Providing adequate electrical and data connections to support technology
- Designing a larger multi-purpose meeting room space
- Meeting the demand for computers
- Making the parking lot more visible
- Creating study room space
- Creating spaces for quiet reading & study
- Incorporating sight lines and open space in new facility
- Coordinating with community groups working on community revitalization



# Community Study

## Skyway Library



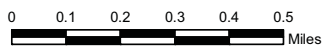
# QUESTIONS?



/g:\naar\1\projects\kcls\client\_services\kcls\_library\_080272010\Skyway.mxd

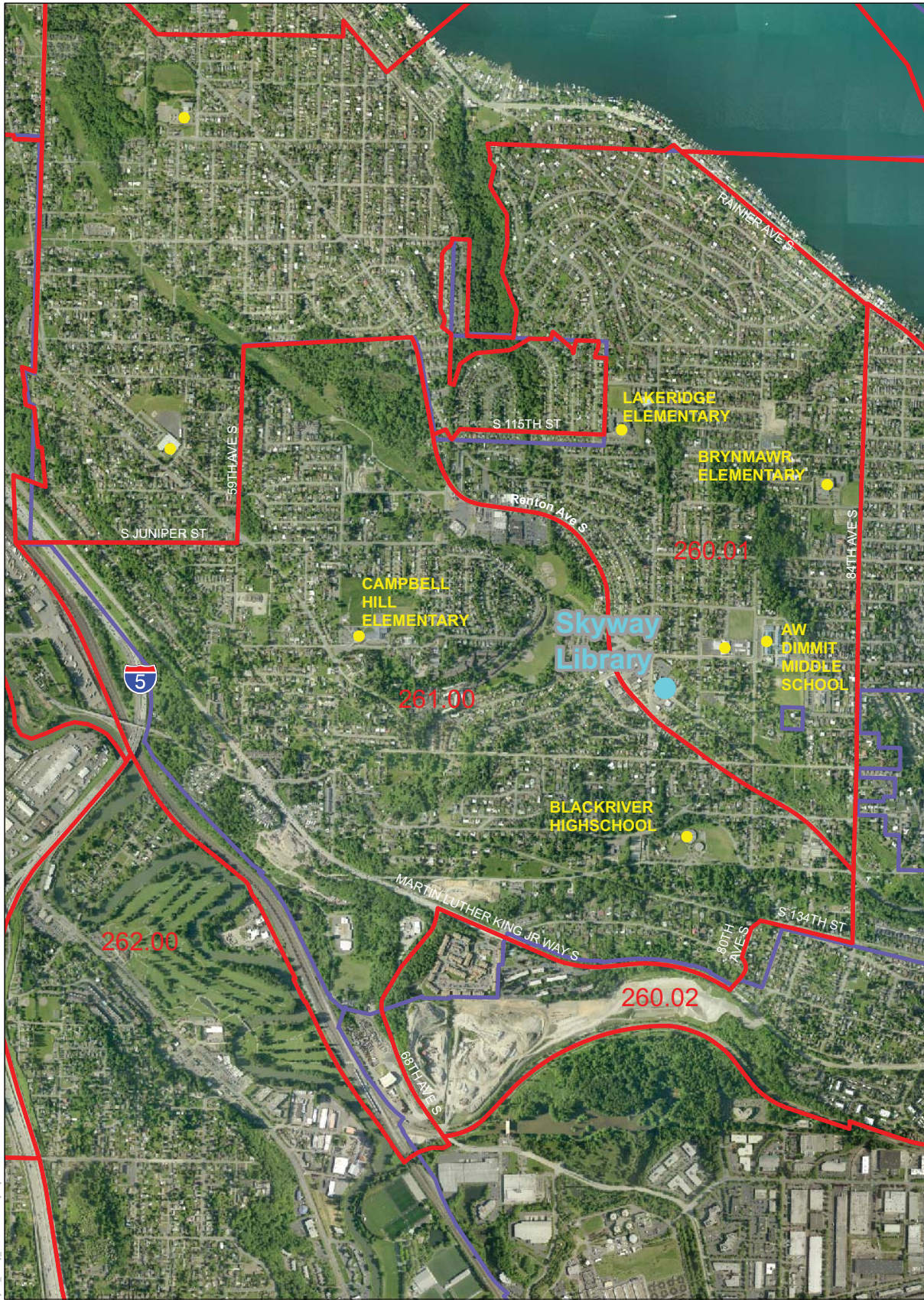
**KEY**

- Census Tracts
- Municipal Boundaries
- Skyway Library
- Schools



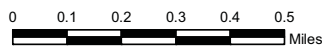
June 2, 2010

**Skyway Library  
King County Library System**



**KEY**

- Census Tracts
- Municipal Boundaries
- Skyway Library
- Schools



June 2, 2010

**Skyway Library  
King County Library System**

/g:\east\1\projects\kcs\client\_services\k\library\090272010\SkywayOrho.mxd

## *Skyway Library Community Study Demographic Summary*

Census Data	Skyway Library Service Area (2000)	Skyway Library Service Area (2009)	King County (2000 Census)	King County (2008 American Community Study)
Population	21,918	23,256	1,737,034	1,859,284
Average household size	3.03		2.39	2.39
Median age	36.2	39.3	35.7	38.5
Birth to 5 Years		7.7%	7.61%	N/A
17 years and younger		22.0%	22.5%	21.6%
18 years and older		78.0%	77.5%	78.4%
65 years and older		11.2%	10.5%	10.6%
85 years and older		1.6%	1.4%	N/A
White	48.1%	41.7%	75.7%	73.2%
African American	23.4%	24.9%	5.4%	5.9%
Asian/Pacific Islander	19.5%	22.0%	10.8%	13.8%
Hispanic	6.2%	8.2%	5.5%	7.4%
American Indian and Alaskan Native	0.8%		0.9%	0.7%
Owner occupied housing	54.4%	53.0%	59.8%	62.3%
Median home value		\$ 328,000	\$ 236,900	\$ 433,300
Renter occupied housing	45.6%	47.0%	40.2%	37.1%
Median household income	\$ 54,706	\$ 54,622	\$ 53,157	\$ 65,580
Education, Less than High School		14.1%	8.4%	N/A
Education, High School Graduate		25.9%	18.2%	N/A
Education, Some College		28.7%	24.5%	N/A
Education, Associate Degree		6.9%	7.5%	N/A
Education, Bachelor's Degree		18.1%	27.7%	N/A
Education, Graduate Degree		6.4%	16.6%	N/A
Employment, Blue Collar		23.3%	17.1%	N/A
Employment, White Collar		63.8%	69.8%	N/A
Unemployed		6.8%	3.7%	N/A
Not in the Labor Force, Male		28.9%	22.6%	23.1%
Not in the Labor Force, Female		36.7%	35.1%	35.6%
Foreign born	17.9%		15.4%	19.0%
Language other than English	23.4%		16.9%	23.1%

## Skyway Library Community Study Population Trends & Growth

CENSUS POPULATION COUNT										
Skyway Library Service Area (by census tract)	2000	2001 (Estimate)	2002 (Estimate)	2003 (Estimate)	2004 (Estimate)	2005 (Estimate)	2006 (Estimate)	2007 (Provisional Estimate)	Change in Population 2000-2007	% Change in Population 2000-2007
260.01	5,132	5,152	5,129	5,086	5,064	5,113	5,062	5,075	-57	-1.10%
260.02	5,812	5,752	5,801	5,777	5,765	5,828	5,890	5,993	181	3.10%
261.00	6,036	6,196	6,193	6,155	6,159	6,249	6,180	6,378	342	5.70%
262.00	4,938	4,982	5,017	4,992	4,987	4,934	5,169	5,178	240	4.90%
<b>Total</b>	<b>21,918</b>	<b>22,082</b>	<b>22,140</b>	<b>22,010</b>	<b>21,975</b>	<b>22,124</b>	<b>22,301</b>	<b>22,624</b>	<b>706</b>	<b>3.22%</b>

Source: WA State Office of Financial Management Small Area Estimates Program (SAEP) version September 13, 2007

Skyway/Bryn Mawr (4005)	2000	2010	2020	2030	2040	Change in Population 2000-2040	% Change in Population 2000-2040
Total Population	11,168	11,421	12,554	13,643	14,746	3,578	32.0%
Total Households	4,337	4,525	5,152	5,797	6,483	2,146	49.5%
Single Family Households	3,545	3,573	3,784	3,954	4,141	596	16.8%
Multi Family Households	792	952	1,368	1,843	2,341	1,549	195.6%

Source: Puget Sound Regional Council, 2006 Forecasts of Population, Households, and Employment

Notes: Although the FAZs are labeled with place names, most do not match official definitions of these places.

FAZs are composed of Census tracts, which are not required to follow city or neighborhood boundaries.

## Skyway Library Community Study School Statistics

2008-09 School Year	School District	Enrollment*	Grades	Free/Reduced Lunch*	English Language Learner*	Ethnicity					
						Black*	Asian or Pacific Islander*	American Indian or Alaska Native*	Hispanic*	White*	
<b>Elementary School</b>											
Bryn Mawr Elementary	Renton	461	K-5	60.5%	16.5%	34.4%	35.9%	1.5%	14.1%	14.1%	
Campbell Hill Elementary	Renton	372	K-5	75.0%	25.5%	38.9%	34.8%	1.4%	15.8%	9.2%	
Lakeridge Elementary	Renton	434	K-5	85.7%	22.4%	54.0%	14.8%	1.7%	14.8%	14.8%	
<b>Middle/Jr. High School</b>											
AW Dimmitt Middle School	Renton	839	6-8	71.5%	12.6%	37.6%	28.3%	1.6%	19.8%	12.8%	
<b>High School</b>											
Black River High School	Renton	143	9-12	64.3%	6.3%	35.7%	3.5%	0.0%	28.7%	32.2%	
<b>Total Enrollment in Library Service Area</b>											<b>2,249</b>

\*Source: OSPI Internet site <<http://reportcard.ospi.k12.wa.us/>>, 2008-2009 school year

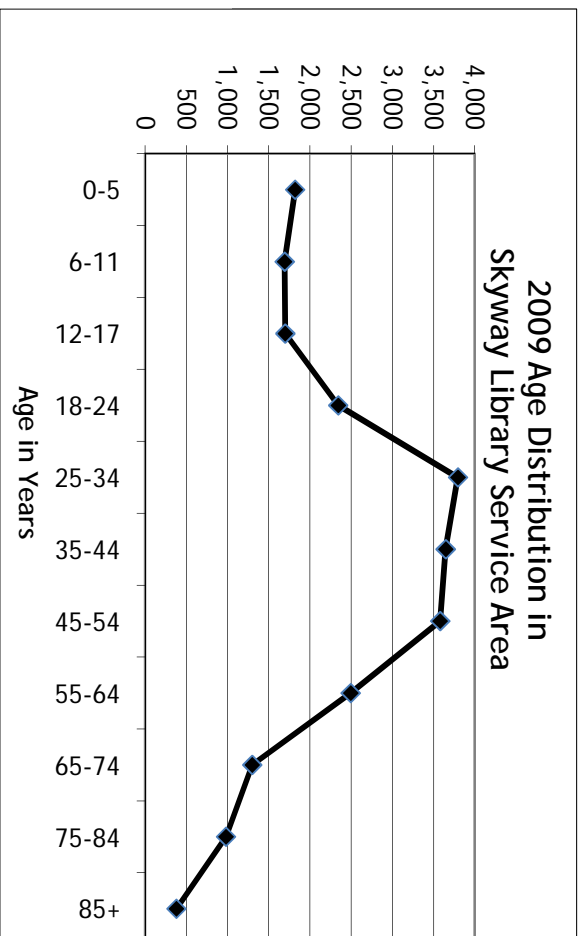
*Skyway Library Community Study*  
*Test Scores*

2008-09 School Year	District	Washington Assessment of Student Learning (WASL)				
		Grade	Reading	Math	Writing	Science
<b>Elementary</b>						
Bryn Mawr Elementary	Renton	3rd	56.4%	48.7%		
		4th	61.3%	22.5%	35.0%	
		5th	64.9%	65.9%		28.6%
Campbell Hill Elementary	Renton	3rd	70.7%	46.6%		
		4th	54.1%	17.6%	51.4%	22.7%
		5th	62.1%	42.4%		
Lakeridge Elementary	Renton	3rd	50.9%	35.2%		
		4th	45.5%	6.1%	34.8%	
		5th	58.7%	25.3%		16.0%
<b>Middle/Jr. High</b>						
AW Dimmitt Middle School	Renton	6th	56.3%	27.8%		
		7th	49.5%	28.8%	56.5%	
		8th	46.7%	26.6%		32.9%
<b>High School</b>						
Black River High School*	Renton	10th	19.00%	2.40%	33.30%	0.00%

Source: OSPI Internet site <<http://reportcard.ospi.k12.wa.us>>

## Skyway Library Community Study Age of Service Area

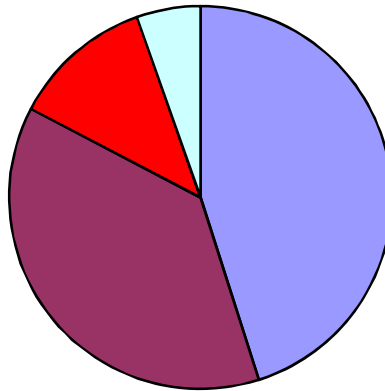
AGE (2009 Estimates)	Skyway Library Service Area	King County
0-5	1,821	142,218
6-11	1,694	138,689
12-17	1,701	141,735
18-24	2,343	183,506
25-34	3,794	302,004
35-44	3,646	297,410
45-54	3,579	292,910
55-64	2,494	181,899
65-74	1,300	86,841
75-84	983	71,714
85+	382	30,337



*Skyway Library Community Study*  
*Race of Service Area*

RACE (2000 Census)	Skyway Library Service Area	King County
White	48.10%	71.53%
African American	23.40%	5.67%
Asian	19.50%	13.29%
Hispanic or Latino	6.20%	7.07%
Other Races	2.80%	9.51%

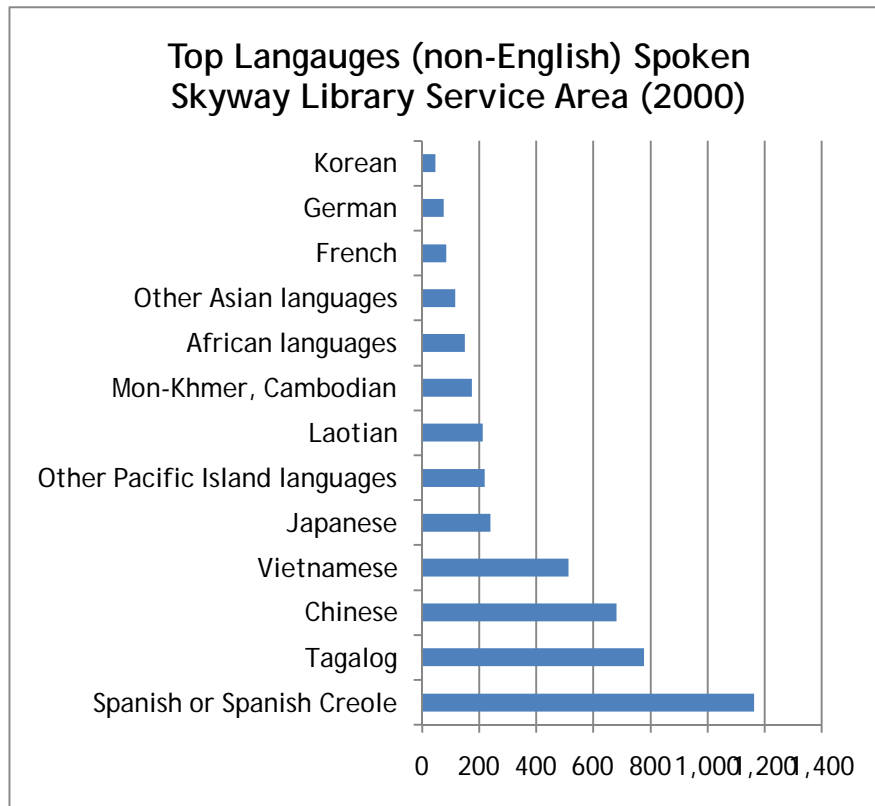
Race (other than white) of Population in  
Skyway Library Service Area (2000)



■ African American  
 ■ Asian  
 ■ Hispanic or Latino  
 ■ Other Races

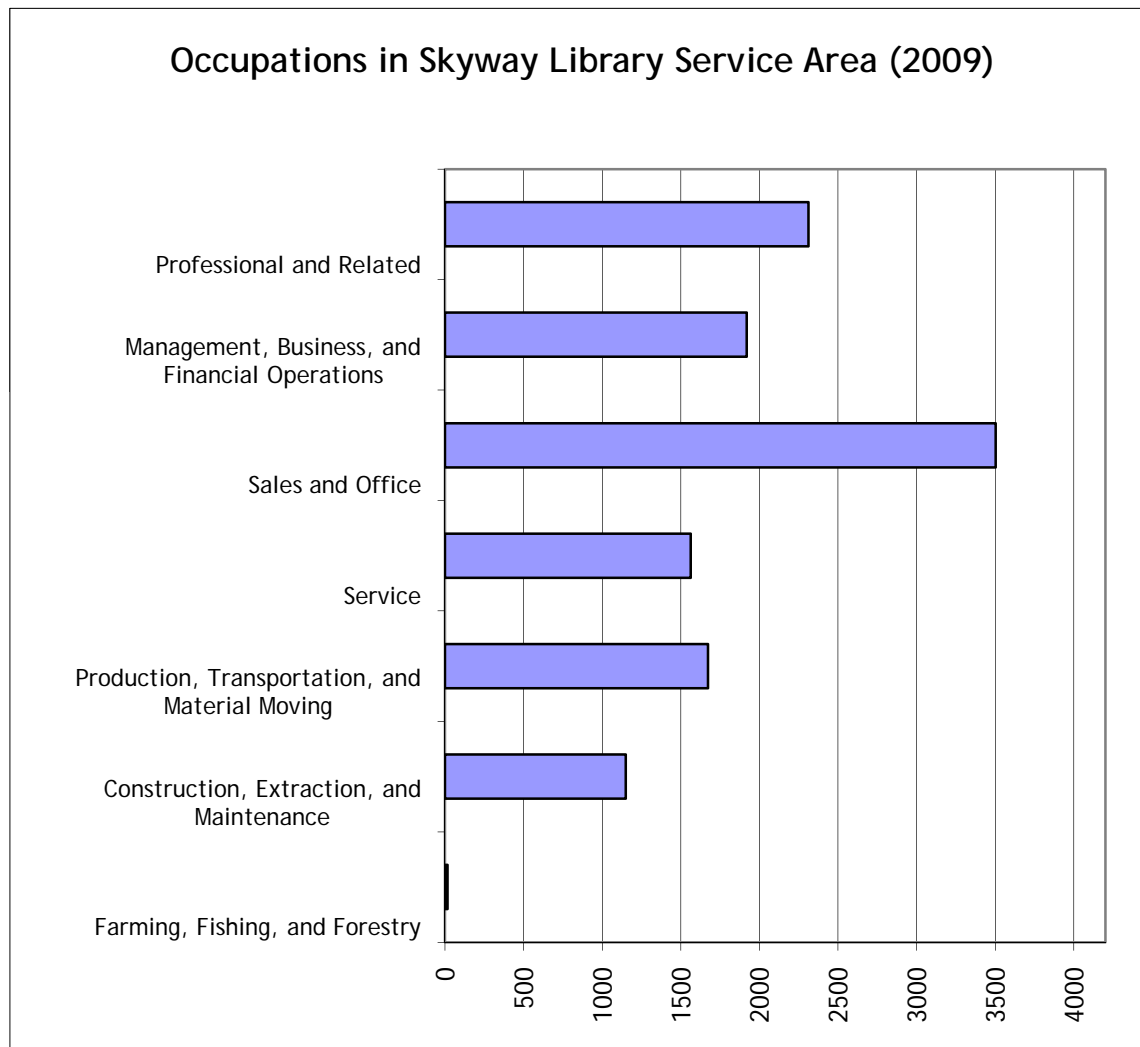
*Skyway Library Community Study  
Languages Spoken at Home*

LANGUAGE (2009 Estimates)	Skyway Library Service Area	King County
Spanish %	1,427 6.2%	79,771 4.6%
Other Indo-European Languages %	512 2.3%	78,839 4.5%
Asian and Pacific Island Languages %	3,349 15.1%	159,180 9.1%
Other Language %	197 8.9%	17,468 1.0%



## *Skyway Library Community Study Occupation Profile*

OCCUPATION (2009 Estimates)	Skyway Library Service Area	King County
Construction, Extraction & Maintenance	9.47%	7.31%
Farming, Fishing & Forestry	0.12%	0.19%
Management, Business & Financial Operations	15.82%	18.26%
Production, Transportation & Material Moving	13.79%	9.26%
Professional and Related	19.05%	26.21%
Sales and Office	28.87%	25.70%
Service	12.87%	13.07%



# SKYWAY LIBRARY CHILDCARE INFORMATION

---

## **Licensed Childcare**

*(Based on data received from Child Care Resources for 98178)*

- ❑ 0 licensed center-based childcares
- ❑ 17 licensed home-based childcares with a capacity to serve 139 children

## **Preschools**

Preschools are difficult to identify because they are usually private and not required to be licensed, but this list includes those identified by Child Care Resources in the library service area. Capacity is in parentheses ( ) when it was available.

- ❑ Merrie's Family Child Care

## **Head Start/ECEAP Sites**

There are no ECEAP sites in the Skyway Library Service Area.

## **KidReach Service (after school and summer programs receiving books)**

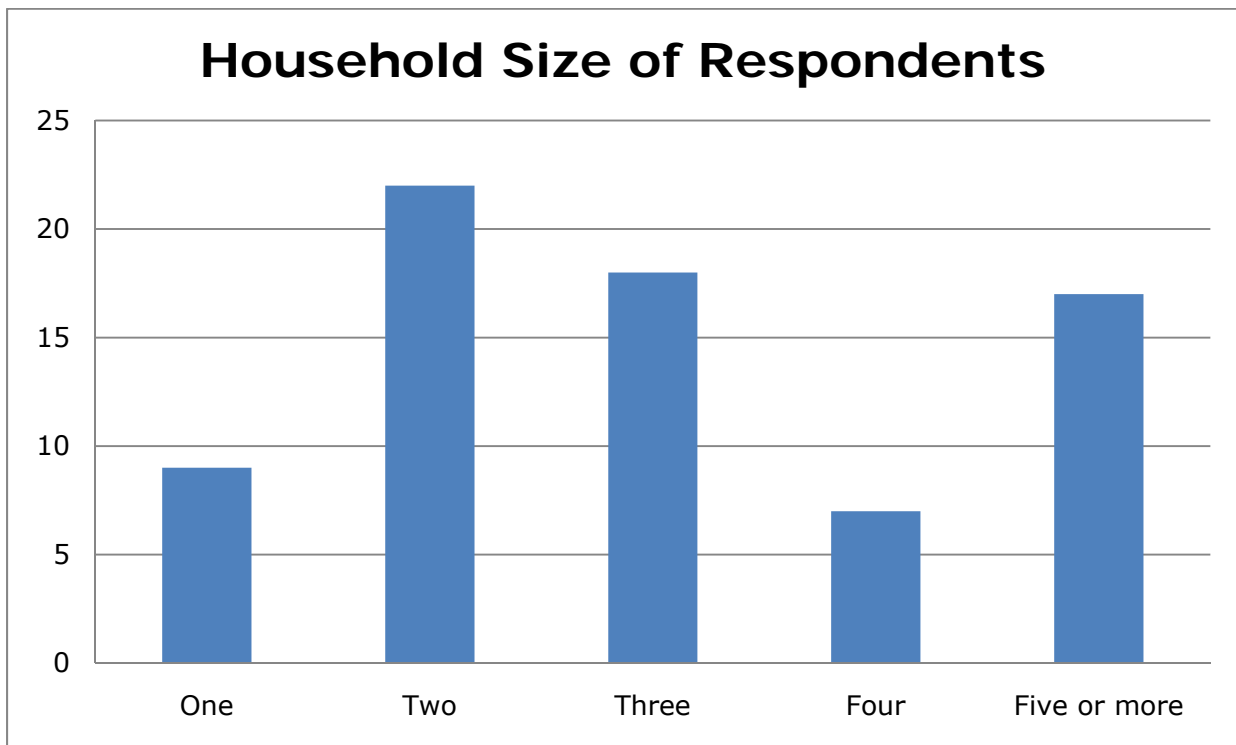
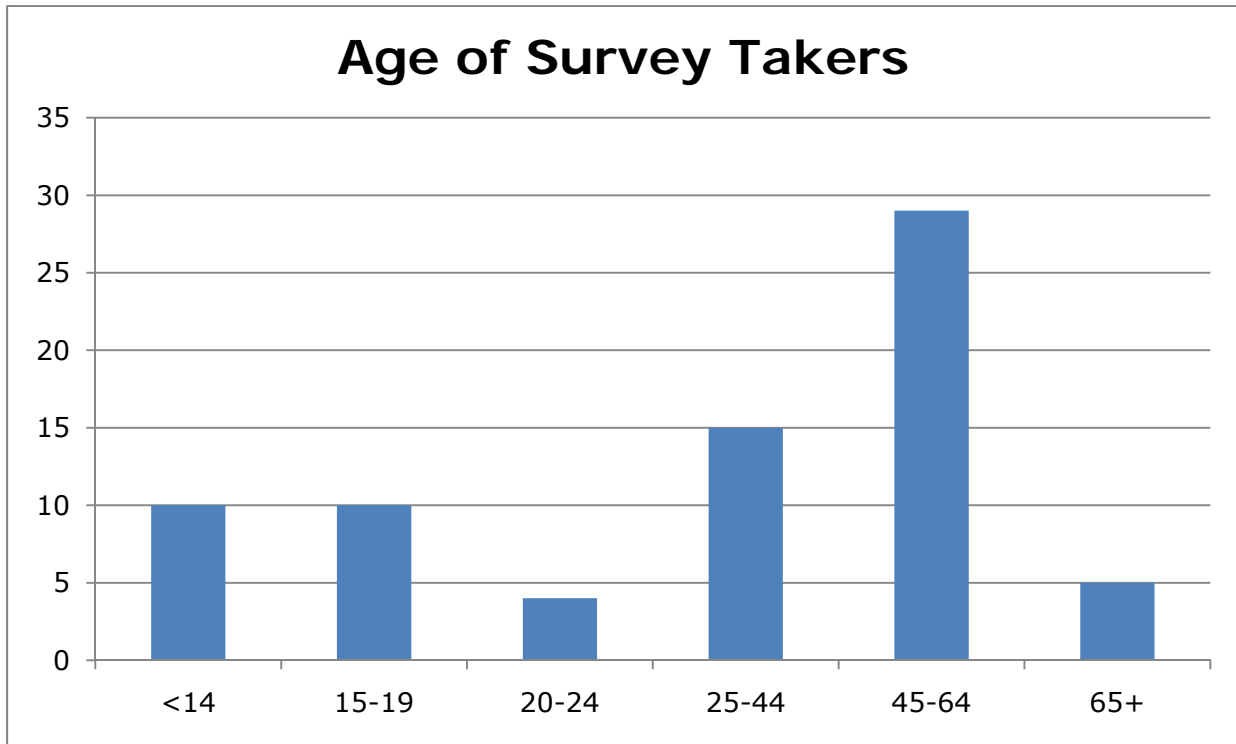
There are no KidReach sites in the Skyway Library service area. The Renton/Skyway Boys and Girls Club offers before and after care for school-age children.

## **StoryTrain Service**

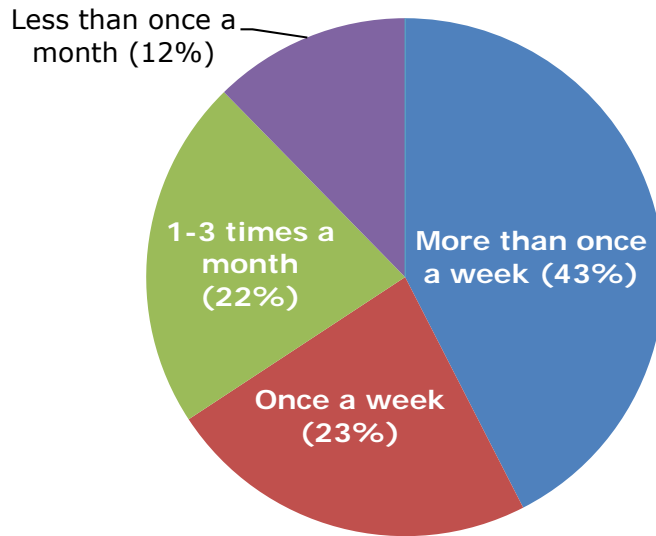
The KCLS/Literacy AmeriCorps program has visited the Skyway area six times and trained 5 licensed provider serving 42 children.

# SKYWAY LIBRARY SURVEY RESPONSE SUMMARY

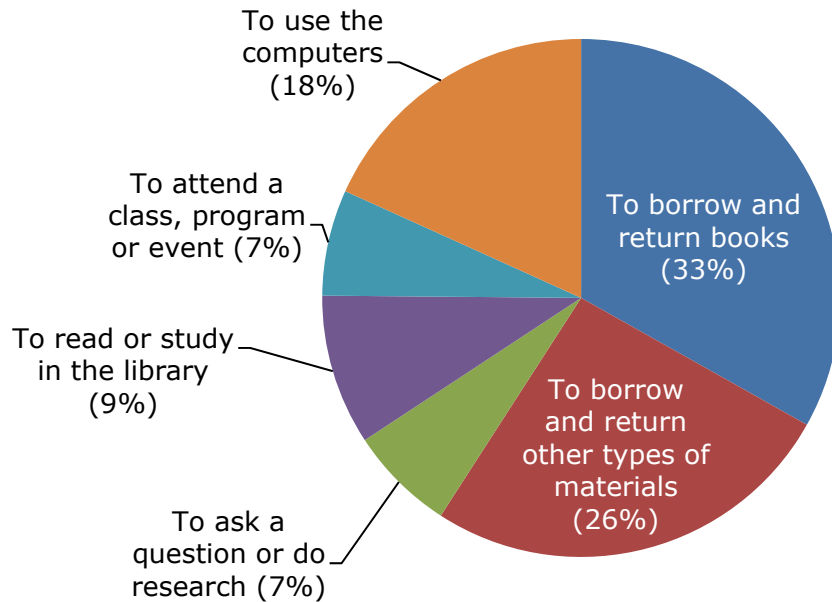
---



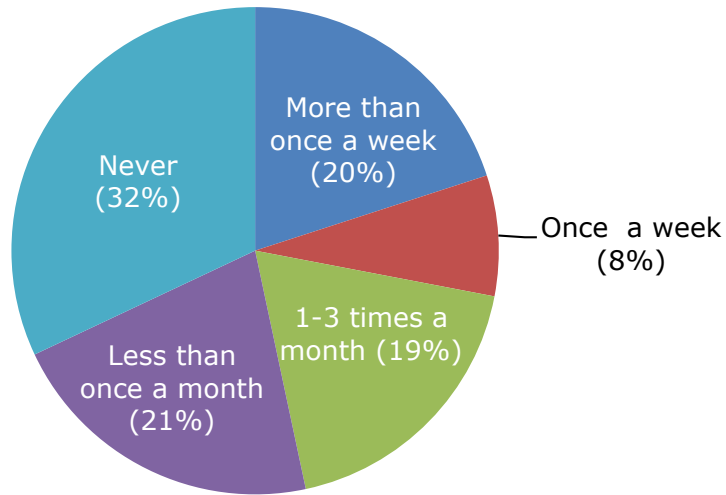
## Frequency of Library Visits



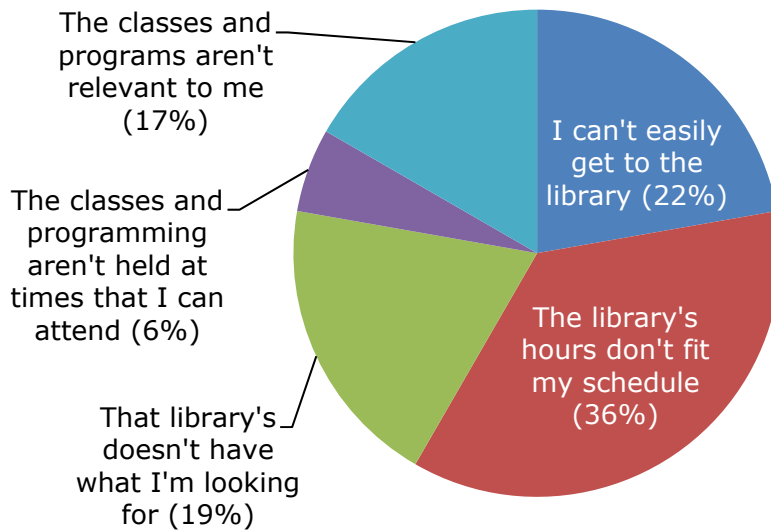
## Reasons for Visiting the Library



## Internet Use at the Library



## Factors Preventing Library Use



Source: 2010 Skyway Library Patron Surveys

# SOURCES

---

## Articles

- "Without county support, Skyway annexation may not go to a vote," Renton Reporter, July 27, 2010.

## Databases

- Reference USA
- Dun and Bradstreet The Million Dollar Database

## Interviews:

- Skyway Solutions
- RAYS

## Websites

- Skyway Classic Car Show & Party in the Park 2009:  
[www.youtube.com/watch?v=Ls6rrPCq3Vg](http://www.youtube.com/watch?v=Ls6rrPCq3Vg)
- <http://www.westhillcommunity.com/>
- [www.skywaysolutions.org](http://www.skywaysolutions.org)
- <http://urbanfamilycenter.org/HOME.aspx>
- <http://www.kingcounty.gov/exec/strategy/PerformMgmt/2008AGR.aspx>
- <http://rentonwa.gov/government/default.aspx?id=6226>

## Reports

- An Analysis of Diversity in King County, Robert Packwood
- Annual Drinking Water Quality Report-2010, Skyway Water & Sewer District
- Executive Proposed West Hill Community Plan and Area Zoning, King County Planning and Community Development Division (1991)
- Puget Sound Regional Council: Small Area Demographic Estimates: 2009
- West Hill Drainage Study Southwest Lake Washington Basin, King County Department of Natural Resources, January 1999
- West Hill Governance Alternatives Assessment, Presented to the West Hill Governance Alternatives Task Force, October 2005, Berk and Associates
- West Hill Project: Governance Options in the Years Ahead, August 1999, Commissioned by King County, Washington. ECONorthwest with Henderson, Young & Company Pacific Rim Resources
- West Hill Community Council Public Safety Initiative Presented to the West Hill Community Council
- August 20, 2008 by Seattle Neighborhood Group